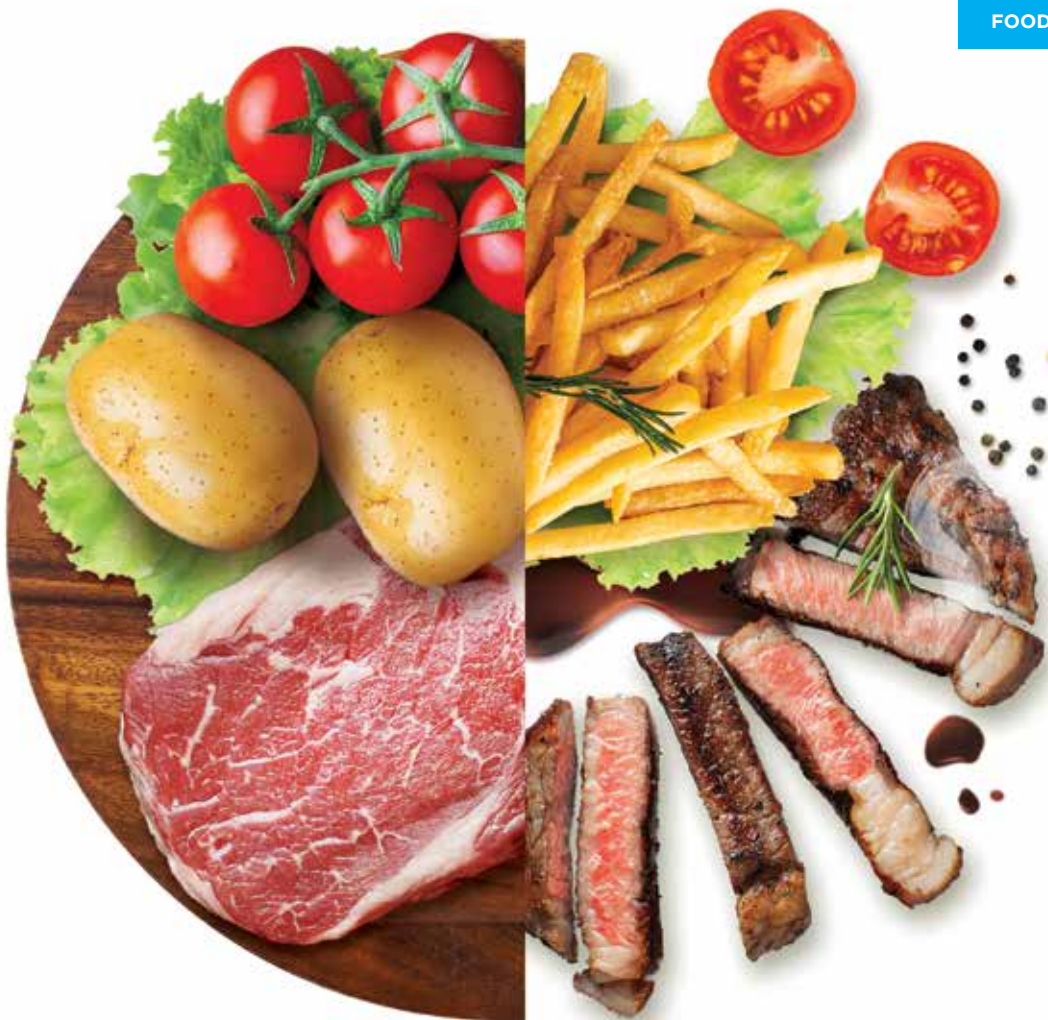


**FROZEN
CHILLED
FRESH**



CONNECTING
LOCAL MARKETS TO
GLOBAL FOOD INNOVATIONS

FOODSERVICE



Bakery	Buffalo	Dairy	Fries	Lamb & Mutton	Seafood	Vegetables
Beef & Veal	Chicken	Duck	Fruits	Pork	Turkey	



FOODSERVICE

We provide world-class foodservice supply chain operations throughout Southeast Asia and China. We deliver customised products with added logistical and regulatory support.



As one of the leading food distribution companies in the region, we pride ourselves as the experts in handling a comprehensive range of specialised services for the food industry. With over 20 years in the business, we operate more than 25 offices and warehouses in China, Indonesia, Malaysia, Philippines, Sri Lanka, Thailand and Vietnam.

Our seven services are catered for four active divisions – Industry, Foodservice, Retail, and Consumer. We deliver our customers' expectations, in the quantity they favour, payable in local currency, anytime and anywhere they want.

CONTENTS

01

BAKERY

- 8 Authentic Danish Pastry
- 8 Baguette
- 9 Burger/Sausage Bun & English Muffin
- 9 Cookies
- 9 Culinary Aid Products
- 10 Danish Pastry
- 13 Donuts & Filled Donuts
- 13 Flatbread
- 15 Gipfel & Croissant
- 16 Glaze
- 16 Gluten Free
- 16 Large Roll/Sandwich Size
- 16 Loaf
- 18 Muffin & Premium Muffin
- 19 Pie
- 19 Pizza
- 19 Pound Cake
- 20 Puff Pastry
- 21 Roll & Bun
- 22 Waffles

02

BEEF & VEAL

- 24 Beef Bone
- 24 Beef Brisket
- 24 Beef Carcass
- 24 Beef Chop, Steak, Strip, Slice and Fillet
- 25 Beef Fat
- 26 Beef Loin and Tenderloin
- 26 Beef Neck, Chuck and Blade
- 29 Beef Oxtail
- 29 Beef Rib
- 29 Beef Round
- 30 Beef Rump and Sirloin Butt
- 30 Beef Shank
- 30 Beef Trimming and Mechanically Deboned Meat (MDM) (Incl. Diced, Minced, etc.)





03

BUFFALO

- 32 Buffalo Brisket or Flank
- 32 Buffalo Carcass
- 32 Buffalo Chop, Steak, Strip, Slice and Fillet
- 32 Buffalo Leg Hind-End
- 33 Buffalo Loin Tenderloin
- 33 Buffalo Shoulder Fore-End
- 33 Buffalo Trimming Mechanically Deboned Meat (MDM)

04

CHICKEN

- 36 Chicken Breast
- 36 Chicken Carcass
- 37 Chicken Chop, Steak, Strip Slice and Fillet
- 37 Chicken Fat Rind (Skin)
- 37 Chicken Feet
- 37 Chicken Leg
- 39 Chicken Mechanically Deboned Meat (MDM) (Incl. Minced, Diced, Sliced, etc.)
- 39 Chicken Wing
- 40 Processed Chicken Products

05

DAIRY

- 42 Butter
- 42 Cheese
- 44 Cream
- 44 Milk

06

DUCK

- 46 Duck Carcass



CONTENTS

07 FRIES

- 48 Coated Fries
- 48 Crinkle Cut Fries
- 49 Hash Browns
- 49 Pommes Noisettes/Rissoles
- 49 Shoestring Fries
- 49 Straight Cut Fries
- 50 Wedges

08 FRUITS

- 52 Frozen Fruit
- 54 Frozen Pulp & Puree

09 LAMB & MUTTON

- 56 Lamb & Mutton Carcass
- 56 Lamb & Mutton Leg
- 57 Lamb & Mutton Rib
- 58 Lamb & Mutton Shank
- 58 Lamb & Mutton Shoulder
- 58 Lamb & Mutton Trimming and Mechanically Deboned Meat (MDM) (Incl. Diced, Minced, etc.)
- 59 Lamb Chop, Steak, Strip, Slice and Fillet
- 59 Mutton Bone
- 59 Mutton Loin
- 59 Mutton Organ, Offal and Other Co-Products

10 PORK

* Not available in Malaysia & Indonesia

- 62 Pork Belly
- 65 Pork Bone
- 66 Pork Carcass
- 66 Pork Chop, Steak, Strip, Slice and Fillet
- 66 Pork Collar (Neck)
- 66 Pork Fat and Rind (Skin)
- 67 Pork Jowl
- 68 Pork Leg and Ham
- 68 Pork Loin
- 70 Pork Organ, Offal and Other Co-Products
- 73 Pork Rib
- 74 Pork Shoulder and Fore-End (Forend)
- 74 Pork Trimming and Mechanically Deboned Meat (MDM) (Incl. Diced, Minced, etc.)

11 SEAFOOD

- 76 Fresh Fish
- 77 Frozen Crustacean
- 78 Frozen Fish
- 83 Frozen Mollusc
- 86 Frozen Processed Seafood Products

12 TURKEY

- 88 Processed Turkey Products
- 88 Turkey Carcass
- 88 Turkey Trimming and Mechanically Deboned Meat (MDM) (Incl. Diced, Minced, etc.)

13 VEGETABLES

- 90 Dehydrated/Dried Vegetables
- 90 Frozen Vegetables

CONTACT US

- 91 Malaysia
- 91 China
- 91 Indonesia
- 92 Philippines
- 92 Sri Lanka
- 92 Thailand
- 92 Vietnam



01 BAKERY

Baked goods are made from dough or batter that underwent a baking process normally done in an oven.



BAKERY



Authentic Danish Pastry

Air Extraction Technology. Made with 100% vegetable oils and fats, sustainable RSPO certified palm oil, NO artificial colouring and flavouring, NO titanium dioxide in icing, real Bourbon Vanilla, free-range eggs only.

Fruit danishes with NO modified starches, fruit concentrates, preservatives, artificial flavouring, solely own fruit flavour.

Cinnamon Whirl, Pre-Proven

- 48 pcs/ctn (85g)

Vanilla Crown, Pre-Proven

- 48 pcs/ctn (100g)

Origin: Denmark

Baguette

A long, thin loaf of French bread that is commonly made from basic lean dough. Distinguishable by its length and crisp crust.

Flute Baguette Wholemeal, Pre-Baked

- 18 pcs/ctn (210g)

Flute Baguette, Pre-Baked

- 18 pcs/ctn (210g)

French Baguette - Medium - Fully Baked, Thaw & Serve

- 20 pcs/ctn (195g)

French Baguette - Medium, Pre-Baked

- 20 pcs/ctn & Retail Packed: 2pcs
9 packs/ctn (195g)

Plain Baguette - Long, Pre-Baked

- 12 pcs/ctn (280g)

Rustico Baguette - Medium, Pre-Baked

- 20 pcs/ctn (200g)

Wholemeal Baguette - Long, Pre-Baked

- 12 pcs/ctn (280g)

Wholemeal Baguette - Medium, Pre-Baked

- 20 pcs/ctn (200g)

Origin: Malaysia

Burger/Sausage Bun & English Muffin

A soft burger designed specifically to hold a hamburger patty/sausage and the accompanying toppings. An English muffin is a small, round, flat yeast-leavened bread, frequently eaten with sweet or savoury toppings.

Burgen Bun**Brioche, Thaw & Serve**

- 40 pcs/ctn (80g)

Oblong Seeded, Thaw & Serve

- 56 pcs/ctn (57-59g)

Plain, 4-inch, Thaw & Serve

- 60 pcs/ctn (57-60g)

Seeded, 4-inch, Thaw & Serve

- 60 pcs/ctn (57-59g)

Seeded, 5-inch, Thaw & Serve

- 32 pcs/ctn (87-90g)

English Muffin**English Muffin, Thaw & Serve**

- 120 pcs/ctn (58g)

Sausage Bun**Sausage Bun, Thaw & Serve**

- 48 pcs/ctn (55-57g)

Origin: Malaysia

Cookies

Baked goods that are typically small, flat and sweet. They may include other ingredients such as raisins, oats, chocolate chips, nuts, etc.

Chocolate Chip, Raw Dough

- 320 pcs/ctn (28g)

Cranberry White Chocolate Duo, Raw Dough

- 104 pcs/ctn (85g)

Double Chocolate Chip, Raw Dough

- 320 pcs/ctn (28g)

Double Chunky Chocolate Dream, Raw Dough

- 104 pcs/ctn (85g)

Oatmeal Cinnamon Raisin Cravin', Raw Dough

- 104 pcs/ctn (85g)

Origin: USA

Culinary Aid Products

Semi-finished selection that adds great finesse to your recipes and fits as beautiful canvas for every culinary masterpiece.

Puff Pastry**Danish Plain Square 12cm x 12 cm, Raw Dough**

- 120 pcs/ctn (75g)



Danish Plain Twist, Raw Dough

- 80 pcs/ctn (60g)

Pastry Roll, Raw Dough

- 6 pcs/ctn (2kg)

Puff Pastry 5-inch Square, Raw Dough

- 240 pcs/ctn (60g)

Puff Pastry Sheet, Raw Dough

- 60 pcs/ctn (170g)

Tartlet Shell & Pizza Base

Mini Round Savoury Tartlet, Thaw & Serve

- 288 pcs/ctn (7g)

Mini Round Vanilla Tartlet, Thaw & Serve

- 288 pcs/ctn (7g)

Original Tortilla 8-inch, Pre-Baked

- 160 pcs/ctn (45g)

Pizza Base 8-inch - Medium, Pre-Baked

- 60 pcs/ctn (110g)

Pizza Crust 10-inch - Thin, Pre-Baked

- 60 pcs/ctn (117g)

Pizza Dough SFO, Raw Dough

- 40 pcs/ctn (200g)
- 24 pcs/ctn (350g)

Origin: Malaysia

Danish Pastry

A variant of puff pastry, i.e. a multilayered, laminated sweet pastry in the viennoiserie tradition. Consists of yeast-leavened dough and a type of fat; mostly butter or margarine.

Anko Bar, Pre-Proven

- 140 pcs/ctn (35g)

Banana Gula Melaka, Pre-Proven

- 60 pcs/ctn (80g); 140 pcs/ctn (35g)

Blueberry Surprise, Pre-Proven

- 140 pcs/ctn (35g)

Pain au Chocolat, Pre-Proven

- 72 pcs/ctn (90g)

Pain au Raisin, Pre-Proven

- 100 pcs/ctn (90g)

Raisin Cream Cheese Comb, Pre-Proven

- 60 pcs/ctn (80g); 140 pcs/ctn (35g)

Strawberry Fantasy, Pre-Proven

- 140 pcs/ctn (35g)

Danish

Pandan Kaya, Pre-Proven

- 140 pcs/ctn (35g)

Pineapple, Pre-Proven

- 100 pcs/ctn (45g)

Pineapple, Thaw & Serve

- 80 pcs/ctn (39g)

**"The secret to having an epically
beloved bakery is consistency."**

*— Christina Tosi, American Chef,
Author, and Television Personality*





Diamond

Custard, Pre-Proven

- 112 pcs/ctn (45g)

Custard, Thaw & Serve

- 90 pcs/ctn (39g)

Lychee, Pre-Proven

- 112 pcs/ctn (45g)

Palmier

Vanilla Chocolate, Pre-Proven

- 108 pcs/ctn (45g); 140 pcs/ctn (35g)

Vanilla Chocolate, Thaw & Serve

- 90 pcs/ctn (39g); 120 pcs/ctn (28g)

Roll

Chocolate, Pre-Proven

- 60 pcs/ctn (85g); 112 pcs/ctn (45g); 140 pcs/ctn (35g)

Chocolate, Thaw & Serve

- 76 pcs/ctn (72g); 168 pcs/ctn (28g)

Vanilla Sultana, Pre-Proven

- 108 pcs/ctn (45g); 140 pcs/ctn (35g)

Vanilla Sultana, Thaw & Serve

- 90 pcs/ctn (39g); 120 pcs/ctn (28g)

Scroll

Custard Raisin, Thaw & Serve

- 60 pcs/ctn (42g)

Pandan Kaya, Thaw & Serve

- 60 pcs/ctn (42g)

Strudel

Almond, Pre-Proven

- 90 pcs/ctn (55g); 140 pcs/ctn (35g)

Apple, Pre-Proven

- 90 pcs/ctn (55g); 140 pcs/ctn (35g)

Apple, Thaw & Serve

- 60 pcs/ctn (48g); 120 pcs/ctn (28g)

Custard, Pre-Proven

- 90 pcs/ctn (55g); 140 pcs/ctn (35g)

Custard, Thaw & Serve

- 48 pcs/ctn (100g); 60 pcs/ctn (48g)

Pineapple, Pre-Proven

- 140 pcs/ctn (35g)

Twist

Kaya, Pre-Proven

- 50 pcs/ctn (80g)

Vanilla Chocolate, Pre-Proven

- 50 pcs/ctn (80g)

Vanilla Chocolate, Thaw & Serve

- 50 pcs/ctn (68g)

Vanilla Sultana, Pre-Proven

- 50 pcs/ctn (80g)

Whirl

Cinnamon, Pre-Proven

- 108 pcs/ctn (45g); 140 pcs/ctn (35g)

Kaya, Pre-Proven

- 108 pcs/ctn (45g); 140 pcs/ctn (35g)

Kaya, Thaw & Serve

- 120 pcs/ctn (28g)

Mocha, Pre-Proven

- 108 pcs/ctn (45g); 150 pcs/ctn (35g)

Vanilla, Pre-Proven

- 108 pcs/ctn (45g); 150 pcs/ctn (35g)

Vanilla, Thaw & Serve

- 120 pcs/ctn (28g)

Origin: Malaysia

Donuts & Filled Donuts

Donuts are usually deep fried from flour dough, and typically either ring-shaped or other shapes without a hole, and often filled. Various toppings and flavourings are used, such as sugar, chocolate, or maple glazing.

Donuts

H-Donut, Thaw & Serve

- 48 pcs/ctn (40g); 120 pcs/ctn (20g)

Twist Donut, Thaw & Serve

- 56 pcs/ctn (40g)

Mini Donut Knob, Thaw & Serve

- 230 pcs/ctn (8g)

XL Ring Donut, Thaw & Serve

- 24 pcs/ctn (90g)

Filled Donuts

Chicken Sausage, Thaw & Serve

- 40 pcs/ctn (70g)

Chicken Curry, Thaw & Serve

- 36 pcs/ctn (70g)

Ikan Bilis, Thaw & Serve

- 48 pcs/ctn (70g)

Red Bean, Thaw & Serve

- 36 pcs/ctn (70g)

Origin: Malaysia

Flatbread

Flatbread is a bread made with flour, water, and salt, and then thoroughly rolled into flattened dough.

Light Grain Artisan Flat Bread, Pre-Baked

- 10 pcs/ctn (350g)

Turkish Flat Bread, Pre-Baked

- 10 pcs/ctn (350g)

Origin: Malaysia



**"Butter is very important for
the croissant ... and it gives the
taste of the smoothness of the
croissant."**

*— Laurent Duchêne,
One of France's Top Pastry Makers*



Gipfel & Croissant

The dough is layered with butter, rolled and folded several times in succession, then rolled into a thin sheet that results in a layered, flaky texture, similar to a puff pastry.

Gipfel - 22% Butter

Croissant - 16-28% Butter

Anko Gipfel (Red Bean), Pre-Proven

- 50 pcs/ctn (100g)

Laugen Gipfel Crescent, Pre-Proven

- 60 pcs/ctn (45g)

Baker's Croissant

Pre-Proven

- 140 pcs/ctn (50g); 30 pcs/ctn (100g)

Thaw & Serve

- 52 pcs/ctn (85g)

Butter Croissant

Straight, Pre-Proven

- 80 pcs/ctn (60g); 60pcs/ctn(80g)

Straight, Thaw & Serve

- 60 pcs/ctn (47g)

Butter Gipfel

Closed, Pre-Proven

- 90 pcs/ctn (35g); 60 pcs/ctn & Retail Packed: 8 pcs, 7 packs/ctn (100g)

Closed, Thaw & Serve

- 72 pcs/ctn (30g); 48 pcs/ctn (85g)

Crescent, Pre-Proven

- 90 pcs/ctn (35g)

Crescent, Thaw & Serve

- 50 pcs/ctn (30g)

Mini, Pre-Proven

- 320 pcs/ctn (20g)

Straight, Pre-Proven

- 140 pcs/ctn & Retail Packed: 10 pcs, 26 packs/ctn (28g)
- 52pcs/ctn & Retail Packed: 10 pcs, 9 packs/ctn (70g)

Straight, Thaw & Served

- 96 pcs/ctn (23g)

Wholemeal Straight, Pre-Proven

- 90 pcs/ctn (35g)

Croissant

Cheese, Pre-Proven

- 160 pcs/ctn (30g); 100 pcs/ctn (90g)

Chocolate, Pre-Proven

- 70 pcs/ctn (60g)

Kit Kat, Pre-Proven

- 70 pcs/ctn (60g)

Mak'Cik Croissant, Pre-Proven

- 72 pcs/ctn (50g)

Mini Authentic French Croissant, Thaw & Serve

- 160 pcs/ctn (30g)

Mini French Croissant, Pre-Proven

- 160 pcs/ctn (30g)

Mini French Croissant, Thaw & Serve

- 96 pcs/ctn (23g)

Origin: Malaysia



Glaze

Cold glaze application, no heating required.

Apricot Glaze, Ready to Use

- 1kg/Bottle; 6kg/Pail

Origin: Malaysia

Gluten Free

Gluten-free options that people with coeliac disease can enjoy.

Gluten-Free Apple Cinnamon Muffin, Thaw & Serve

- 90 pcs/ctn (40g)

Gluten-Free Cranberry Raisin Muffin, Thaw & Serve

- 90 pcs/ctn (40g)

Gluten-Free Crusty White Bread, Pre-Baked

- 10 pcs/ctn (250g)

Gluten-Free Multi Grain Bread, Pre-Baked

- 10 pcs/ctn (250g)

Origin: Malaysia

Large Roll/Sandwich Size

To be used for the preparation of sandwiches, it may have a fine crumb (the soft, inner part of bread) and a light texture.

Artisan Grain Ciabatta, Pre-Baked

- 40 pcs/ctn (70g)

Ciabatta, Thaw & Serve

- 50 pcs/ctn (75g)

Focaccia Sandwich , Thaw & Serve

- 32 pcs/ctn (105g)

French Baguette - Short, Pre-Baked

- 50 pcs/ctn (80g)

Laugen Sandwich, Thaw & Serve

- 50 pcs/ctn (80g)

Panini, Thaw & Serve

- 50 pcs/ctn (80g)

Turkish Herb Sandwich Bread, Thaw & Serve

- 42 pcs/ctn (80g)

Turkish Olive Sandwich Bread, Thaw & Serve

- 42 pcs/ctn (80g)

Turkish Sandwich Bread, Thaw & Serve

- 42 pcs/ctn (80g)

Origin: Malaysia

Loaf

Bread that is shaped and baked in a single piece and can be sliced for eating.

Brioche Loaf, Thaw & Serve

- 10 pcs/ctn (350g)

Caraway Rye Bread, Pre-Baked

- 12 pcs/ctn (420g)

Cranberry Pecan Bread, Thaw & Serve


- 12 pcs/ctn (350g)

Danish Bread Loaf, Thaw & Serve

- 10 pcs/ctn (350g)

Farmer Bread, Pre-Baked

- 12 pcs/ctn (350g)

A collage of bread-related images. On the left, a woven basket is filled with thick slices of baguette, showing a golden-brown crust and a hollow interior. To the right, a clear glass is filled with water and garnished with fresh green herbs. In the foreground, several thick slices of dark, seeded bread are stacked, showing a dense crumb with visible seeds.

**"Good flour, yeast, water
and salt are all that's
needed to make a really
good loaf of bread."**

— Great British Chefs



Flexi Grain Bread, Pre-Baked

- 12 pcs/ctn (350g)

French Village Bread, Pre-Baked

- 12 pcs/ctn (350g)

Fruit Loaf, Thaw & Serve

- 10 pcs/ctn (380g)

Garlic Bread, Thaw & Serve

- 24 pcs/ctn (130g)

German Sourdough Bread, Pre-Baked

- 12 pcs/ctn (420g)

Gourmet Bread, Pre-Baked

- 12 pcs/ctn (350g)

High-Fibre Energy Bread, Pre-Baked

- 12 pcs/ctn (350g)

Kraftkorn Bread, Pre-Baked

- 12 pcs/ctn (350g)

Muesli Bread, Pre-Baked

- 12 pcs/ctn (350g)

Multiseed Bread, Pre-Baked

- 12 pcs/ctn (350g)

Rustic Wheat Sourdough Bread, Pre-Baked

- 12 pcs/ctn (350g)

Rye Bread, Pre-Baked

- 12 pcs/ctn (420g)

Sourdough Bread, Pre-Baked

- 12 pcs/ctn (420g)

Sunflower & Multiseed Loaf, Thaw & Serve

- 10 pcs/ctn (350g)

Swiss Sunday Bread, Thaw & Serve

- 12 pcs/ctn (350g)

White Batard Bread, Pre-Baked

- 12 pcs/ctn (350g)

White Bread, Pre-Baked

- 10 pcs/ctn (350g)

Wholemeal Batard Bread, Pre-Baked

- 12 pcs/ctn (350g)

Wholemeal Bread, Pre-Baked

- 12 pcs/ctn (350g)

Origin: Malaysia

Muffin & Premium Muffin

A cupcake-like quickbread (often sweetened) that is chemically leavened and then baked in a mould.

Muffin

Butterscotch Salted Caramel, Thaw & Serve

- 40 pcs/ctn (90g); 88 pcs/ctn (35g)

Chocolate, Thaw & Serve

- 40 pcs/ctn (90g); 88 pcs/ctn (35g)

Green Tea, Thaw & Serve

- 40 pcs/ctn (90g); 88 pcs/ctn (35g)

Red Velvet, Thaw & Serve

- 40 pcs/ctn (90g); 88 pcs/ctn (35g)

Combo, Thaw Serve

- 40 pcs/ctn (90g); 88 pcs/ctn (35g)

Premium Muffin

Blueberry, Thaw & Serve

- 24 pcs/ctn (125g)

Carrot Cake, Thaw & Serve

- 24 pcs/ctn (125g)

Lemon and White Chocolate, Thaw & Serve

- 24 pcs/ctn (125g)

Multiberry, Thaw & Serve

- 24 pcs/ctn (125g)

Triple Choc Secret Centre, Thaw & Serve

- 24 pcs/ctn (125g)

Origin: Malaysia/Ireland

Pie

Made of a pastry dough casing that contains a filling of various sweet or savoury ingredients such as meat, eggs and cheese or a mixture of meat and vegetables.

Chicken Mushroom, Pre-Baked

- 33 pcs/ctn (170g); 48 pcs/ctn (66g)

Chicken Mushroom, Raw Dough

- 44 pcs/ctn (180g); 72 pcs/ctn (75g)

Black Pepper, Pre-Baked

- 33 pcs/ctn (170g); 48 pcs/ctn (66g)

Black Pepper, Raw Dough

- 44 pcs/ctn (180g); 72 pcs/ctn (75g)

Origin: Malaysia

Pizza

A savoury baked dish of Italian origin consisting of a usually round, flattened base of leavened wheat-based dough. Topped with tomatoes, cheese, and often features various other ingredients such as anchovies, mushrooms, onions, olives, pineapple, meat, etc.

Hawaiian Chicken, Pre-Baked

- 30 pcs/ctn (140g)

Teriyaki Chicken, Pre-Baked

- 30 pcs/ctn (140g)

Tandoori Chicken, Pre-Baked

- 30 pcs/ctn (140g)

Origin: Malaysia

Pound Cake

A type of cake traditionally made with a pound of each of the four ingredients: flour, butter, eggs, and sugar. Served either dusted with powdered sugar, lightly glazed, or sometimes with a coat of icing. There are numerous variations with certain countries and regions featuring distinctive styles such as the addition of flavouring agents or dried fruits.

Blueberry, Thaw & Serve

- 20 pcs/ctn (300g)

Chocolate, Thaw & Serve

- 20 pcs/ctn (300g)

Pandan, Thaw & Serve

- 20 pcs/ctn (300g)

Marble, Thaw & Serve

- 20 pcs/ctn (300g)





Mocha, Thaw & Serve

- 20 pcs/ctn (300g)

Vanilla, Thaw & Serve

- 20 pcs/ctn (300g)

Origin: Malaysia

Puff Pastry

A flaky light and airy pastry. Contains several layers of dough and fat, with the most common fat types being butter and margarine.

Savoury Puff Pastry - Puff

BBQ Chicken, Raw Dough

- 100 pcs/ctn (80g)

Chicken Curry Traditional, Raw Dough

- 90 pcs/ctn (80g)

Chicken Rendang, Raw Dough

- 100 pcs/ctn (80g)

Chicken Rendang, Pre-Baked

- 42 pcs/ctn (66g)

Chicken Sausage, Raw Dough

- 100 pcs/ctn (80g)

Curry Potato Turnover Puff, Raw Dough

- 90 pcs/ctn (80g)

Mak'Cik Shell Puff Curry Potato, Raw Dough

- 100 pcs/ctn (60g); 150 pcs/ctn (25g)

Pizza Snack, Raw Dough

- 90 pcs/ctn (80g)

Sardine, Pre-Baked

- 24 pcs/ctn (136g)

Sardine, Raw Dough

- 100 pcs/ctn (80g)

Tuna, Raw Dough

- 100 pcs/ctn (80g)

Mini Savoury Combo - Tuna, Curry Chicken, Chicken Mushroom, Raw Dough

- 240 pcs/ctn (30g)

Mini Savoury Combo 2 - Pizza Snack, Serai Chicken, BBQ Chicken, Raw Dough

- 240 pcs/ctn (30g)

Savoury Puff Pastry - Sausage Roll**Firecracker, Pre-Baked**

- 48 pcs/ctn (100g)

Firecracker, Raw Dough

- 70 pcs/ctn (120g); 100 pcs/ctn (80g)

Garlic, Raw Dough

- 70 pcs/ctn (120g); 100 pcs/ctn (80g)

Honey BBQ, Raw Dough

- 70 pcs/ctn (120g); 100 pcs/ctn (80g)

Thai Tom Yum, Raw Dough

- 70 pcs/ctn (120g); 100 pcs/ctn (80g)

Sweet Puff Pastry - Bar**Almond, Raw Dough**

- 80 pcs/ctn (100g)

Almond, Thaw & Serve

- 60 pcs/ctn (85g)

Apple, Raw Dough

- 100 pcs/ctn (80g)

Pineapple, Raw Dough

- 100 pcs/ctn (80g)

Pineapple, Thaw & Serve

- 70 pcs/ctn (68g)

Sweet Puff Pastry - Puff**Banana, Raw Dough**

- 80 pcs/ctn (100g); 180 pcs/ctn (45g)

Banana, Thaw & Serve

- 60 pcs/ctn (85g)

Durian, Raw Dough

- 280 pcs/ctn (50g)

Kaya Turnover, Raw Dough

- 90 pcs/ctn (80g)

Origin: Malaysia

Roll & Bun

A roll is a small, usually round or oblong individual loaf of bread served as a meal accompaniment. A bun is a small, sometimes sweet, bread-based item that comes in many shapes and sizes, most commonly with a round top and flat bottom.

Ciabatta Roll, Pre-Baked

- 90 pcs/ctn (40g)

Crispy Roll, Pre-Baked

- 110 pcs/ctn (35g)



**Focaccia Bun, Thaw & Serve**

- 90 pcs/ctn & Retail Packed: 10pcs, 8 packs/ctn (40g)

Kaiser Poppy Seed Roll, Pre-Baked

- 110 pcs/ctn (35g)

Kaiser Roll, Pre-Baked

- 110 pcs/ctn (35g)

Kaiser Sesame Seed Roll, Pre-Baked

- 110 pcs/ctn (35g)

Kornspitz, Pre-Baked

- 150 pcs/ctn (35g)

Mini Laugen Sandwich, Thaw & Serve

- 125 pcs/ctn & Retail Packed: 10 pcs, 12 packs/ctn (35g)

Multigrain Roll, Pre-Baked

- 110 pcs/ctn (35g)

Olive Ciabatta Roll, Pre-Baked

- 100 pcs/ctn (40g)

Parisette Roll, Pre-Baked

- 280 pcs/ctn (35g)

Polypeptide Soft Roll, Thaw & Serve

- 90 pcs/ctn (35g)

Rustico Roll, Pre-Baked

- 280 pcs/ctn (35g)

Soft Bun, Thaw & Serve

- 90 pcs/ctn (35g)

Soft Bun Wholemeal, Thaw & Serve

- 90 pcs/ctn (35g)

Wholemeal Roll, Pre-Baked

- 125 pcs/ctn (35g)

Bun & Laugen Mix (Kaiser Soft Bun/Soft Bun Wholemeal/Focaccia/Laugen), Thaw & Serve

- 120 pcs/ctn (35g)

Four Season Mix (Ciabatta/Rustico/Parisette/Korn Kaiser), Pre-Baked

- 120 pcs/ctn (35g)

Premium Bread Roll Mix (Kornspitz/Focaccia/Parisette/Laugen), Pre-Baked

- 280 pcs/ctn (35g)

Origin: Malaysia

Waffles

Waffles are eaten throughout the world, particularly in Belgium. Made from leavened batter or dough that is cooked between two plates that are patterned to give a characteristic size, shape, and surface impression. Can be eaten plain or eaten with various toppings such as butter, chocolate chip, honey, whipped cream, syrup, jam or spread.

Belgian Waffle, Chocolate, Thaw & Serve

- 80 pcs/ctn (50g)

Belgian Waffle, Original, Thaw & Serve

- 80 pcs/ctn (50g)

Origin: Malaysia

02 BEEF & VEAL

Beef is the culinary name for red meat from cattle while veal refers to meat from calves, normally between six and eight months old.



BEEF & VEAL



Beef Bone

Consists of any one or combination of shank, femur, or humerus bones.

Beef Neck Bone

- 15-20kg per Carton

Origin: New Zealand

Beef Brisket

Underside chest area between the front legs.

Beef Brisket

- 4-5kg per Pack
- 20-25kg per Carton
- 30-35kg per Carton

Origin: Australia, USA

Beef Navel Brisket

- 2-3kg per Pack

Origin: Spain

Beef Carcass

The carcass consists of two matched sides (forequarter and hindquarter).

Beef Forequarter, Boneless (80-85 VL)

- 20-30kg per Carton

Origin: Brazil, Australia, Argentina

Beef Robbed Forequarters (90VL)

- 24-26kg per Carton

Origin: Brazil

Beef Chop, Steak, Strip, Slice and Fillet

Beef that is sliced, chopped or stripped into individual steaks, fillet or other retail cuts.

Beef Hanging Tender

- 20-30kg per Carton
- 3-4kg per Slab

Origin: USA, Canada

Beef Hanging Tenderloin

- 2.5-4kg per Pack

Origin: USA

Beef Sirloin Steak, 1-1.5cm

- 0.5-1kg per Pack

Origin: Indonesia

Beef Striploin Steak, 200g

- 1kg per Pack

Origin: Australia

Cube Roll

- 5-7kg per Pack
- 19-23kg per Carton

Origin: Australia

Cube Roll Steak

- 1kg per Pack

Origin: Australia

Cube Roll, Yakiniku Slice

- 0.5kg per Pack

Origin: Australia

US Beef Short Plate, Yakiniku Sliced

- 0.5-1kg per Pack

Origin: USA

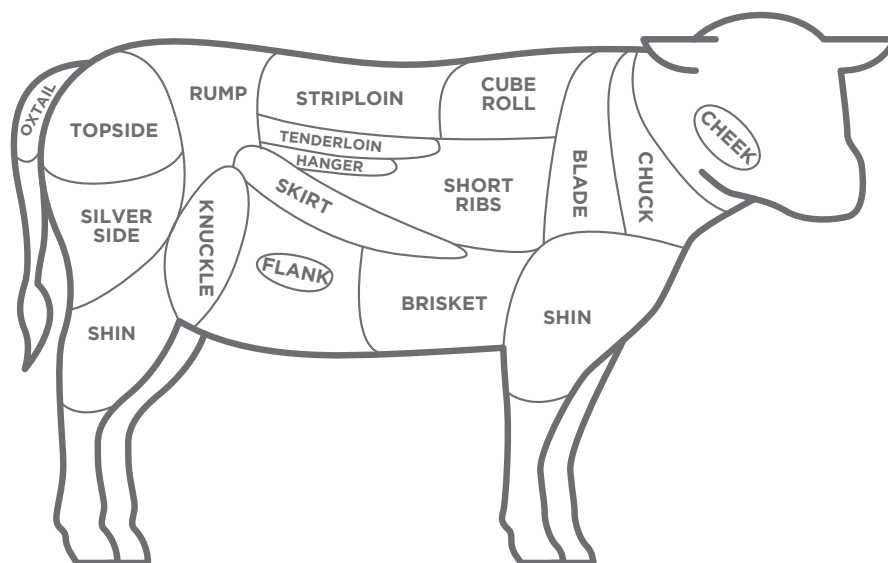
Beef Fat

Beef body fat, no gland and tendon.

Beef Fat

- 20-25kg per Carton

Origin: USA, Brazil, Australia, Philippines, Netherlands, UK, New Zealand





Beef Loin and Tenderloin

The loin consists of short loin, sirloin and the tenderloin.

Beef Short Loin

- 8-11kg per Pack
- 30kg per Carton

Origin: Australia, USA

Beef Sirloin

- 5-6kg per Pack
- 27-30kg per Carton

Origin: Australia, USA

Beef Striploin, Grade A & B

- 3-6kg per Pack
- 16-30kg per Carton

Origin: USA, Thailand, Australia, Japan, Canada

Beef Tenderloin

- 1-3kg per Pack
- 20-30kg per Carton

Origin: USA, India, Australia, Japan

Beef Top Sirloin

- 30-35kg per Carton

Origin: Australia, USA

Beef Neck, Chuck and Blade

The chuck is derived from the neck area while the blade is from the shoulder region.

Beef Blade

- 19-24kg per Carton

Origin: Australia

Beef Chuck, Bone

- 19-21kg per Carton

Origin: Australia

Beef Chuck Eye Roll

- 7-11kg per Pack
- 3-4 Slabs per Carton

Origin: New Zealand

Beef Chuck Roll, Boneless

- 7-10kg per Slab

Origin: Japan

Beef Chuck - Short Rib, Boneless

- 7-10kg per Slab

Origin: Japan

Beef Chuck Tender

- 15-28kg per Carton

Origin: Australia, USA

Beef Shoulder Clod


- 25-30kg per Carton

Origin: Wagyu

Beef Top Blade


- 1.5-2.5kg per Pack
- 6-7 Slabs per Carton
- 25-30kg per Carton

Origin: USA



**"I can't emphasise this
enough – always leave
the meat for at least two
minutes before you turn it."**

— James Peck,
Founder of Burnt Lemon Chefs



**"Want soft and juicy meat?
Use baking soda as a meat
tenderiser."**

— Anonymous Chinese Chef

Beef Oxtail

The cut starts at the base of the spine. The fat is trimmed and the last two to three tail bones removed, before being cut into short joints.

Beef Oxtail

- 1.5-2kg per Pack
- 9-21kg per Carton

Origin: Australia, New Zealand, Indonesia

Beef Oxtail Centre Cut (B)

- 0.5kg-3kg per Pack

Origin: Indonesia

Beef Oxtail Mix Cut (A, C, D)

- 0.5kg-3kg per Pack

Origin: Indonesia

Beef Rib

Refers to the portion of the forequarter and contains seven ribs (6th to 12th inclusive).

Beef Back Ribs

- 16-22kg per Carton

Origin: Australia

Beef Rib

- 4-5kg per Pack
- 25-30kg per Carton

Origin: USA, Wagyu

Beef Rib Eye

- 3-8kg per Pack
- 25-30kg per Carton

Origin: USA, Australia, Wagyu

Beef Rib Eye, Lip-On

- 5-6kg per Pack
- 19-30kg per Carton

Origin: USA, Australia

Beef Rib Eye, Lip-Off, Grade S

- 17-20kg per Carton

Origin: Australia

Beef Rib Eye Roll, Boneless

- 5-6kg per Slab

Origin: Japan

Beef Rib Finger

- 25kg per Carton

Origin: USA

Beef Short Plate

- 2-6kg per Pack
- 22-30kg per Carton

Origin: USA

Beef Short Rib, Bone-In

- 15-31kg per Carton

Origin: USA, New Zealand

Beef Short Rib, Boneless

- 20-40kg per Carton

Origin: USA, Australia



Beef Round

A Bone-In item consisting of top, bottom, knuckle, rump, heel and shank.

Beef Knuckle

- 22-35kg per Carton

Origin: New Zealand, Australia, USA, Brazil

Beef Topside

- 16-27kg per Carton

Origin: Australia, Brazil, Spain

Beef Rump and Sirloin Butt

The rump is a boneless five-musclcd primal that sits between the sirloin and topside.

Beef Rump

- 19-23kg per Carton

Origin: Australia

Beef Shank

The beef shank or shin is prepared from the lower part of either the front or rear leg.

Beef Fore Shank

- 3-5kg per Slab

Origin: New Zealand

Beef Shank

- 4-5kg per Slab

Origin: New Zealand

Beef Trimming and Mechanically Deboned Meat (MDM) (Incl. Diced, Minced, etc.)

A meat product that has been trimmed, diced, ground, minced, etc.

Beef Industrial Meat

- 24-26kg per Carton

Origin: Brazil

Beef Trimming, Bone-In (50CL/VL)

- 20-30kg per Carton

Origin: Canada, USA

Beef Trimming, Boneless (65, 70, 90CL/80, 90VL)

- 15-27kg per Carton

Origin: Germany, Brazil, Philippines, Ireland, New Zealand, Netherlands

Ground and Minced Beef

- 10kg per Carton

Origin: Brazil



03 BUFFALO

Buffalo red meat comes from the water buffalo, with long and curved horns, raised for its milk and meat in many countries.



BUFFALO



Buffalo Brisket or Flank

Refers to the underside chest area between the front legs.

Buffalo Brisket, Point End

- 20kg per Carton, IWP

Buffalo Brisket, Navel End

- 20kg per Carton, IWP

Origin: India

Buffalo Carcass

The carcass consists of two matched sides (forequarter and hindquarter).

Buffalo Forequarter (95CL)

- 20kg per Carton

Origin: India

Buffalo Chop, Steak, Strip, Slice and Fillet

Buffalo meat that has been sliced, chopped, stripped into individual steaks, fillet or other retail cuts.

Buffalo Cube Roll

- 20kg per Carton

Origin: India

Buffalo Leg Hind-End

Consists of the part at the end of hind leg such as knuckle, rump, silverside and topside.

Buffalo Knuckle

- 20kg per Carton, IWP

Buffalo Rump

- 20kg per Carton, IWP

Buffalo Silverside

- 20kg per Carton, IWP

Buffalo Topside

- 20kg per Carton, IWP

Origin: India

Buffalo Loin Tenderloin

Consists of any one or combination of striploin and tenderloin.

Buffalo Striploin

- 20kg per Carton, IWP

Buffalo Tenderloin

- 20kg per Carton
- 16-17kg per Carton

Origin: India

Buffalo Shoulder Fore-End

Consists of the tender parts including blade, chuck tender and rib eye.

Buffalo Blade

- 20kg per Carton, IWP

Buffalo Chuck

- 20kg per Carton, IWP

Buffalo Chuck Tender

- 20kg per Carton, IWP

Buffalo Rib Eye

- 20kg per Carton, IWP

Origin: India

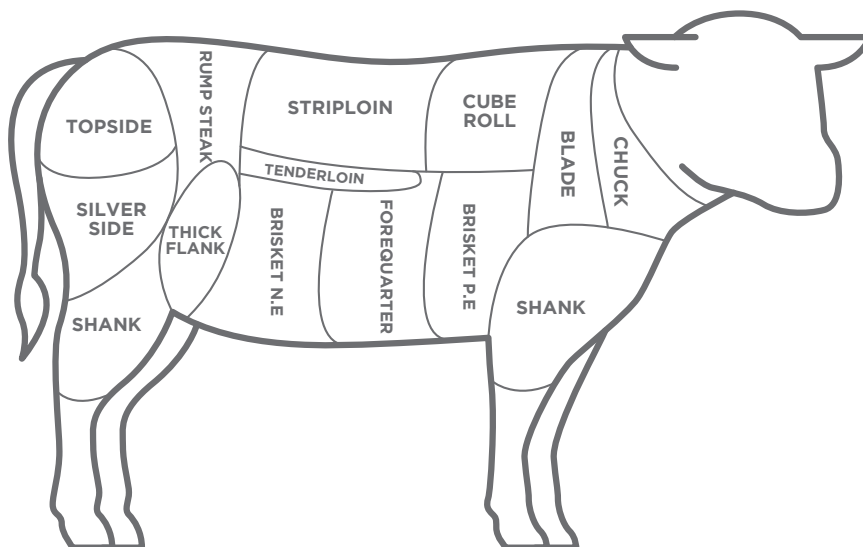
Buffalo Trimming Mechanically Deboned Meat (MDM)

A buffalo product that has been trimmed diced, ground, minced, etc.

Buffalo Sliced Meat

- 18kg per Carton, IWP

Origin: India





04 CHICKEN

It refers to white meat that comes from the domestic chicken.



CHICKEN



Chicken Breast

Lean cuts of meat taken from the pectoral muscle on the underside of the chicken.

Chicken Breast, Boneless

- 12kg per Carton

Origin: Thailand

Chicken Breast Cartilage

- 10kg per Carton

Origin: Brazil

Chicken Breast Half, Boneless, Rindless

- 5kg per Bag
12kg per Carton

Origin: Philippines

Chicken Carcass

Whole chicken, with all parts intact.

Free-Range Chicken, Whole

- 0.6-0.7kg per Pack

Origin: Indonesia

Probiotic Whole Chicken

- 0.8-1kg per Pack

Origin: Indonesia

Three Yellow Chicken (Whole)

- 38kg per Carton

Origin: China

Chicken Chop, Steak, Strip Slice and Fillet

The chicken chop consists of thigh, drumstick meat and knuckle attached to the end of the drumstick meat.

Chicken Thigh Chop, Bone-In

- 12kg per Carton

Origin: Thailand

Chicken Fat Rind (Skin)

Chicken skin consists of a thick dermis (inner layer) and a thin epidermis (outer layer) with a lipids content of about 45%.

Chicken Skin

- 15kg/20kg per Carton

Origin: Brazil/Canada

Chicken Skin (Breast)

- 10kg/20kg per Carton

Origin: Ireland/Canada

Chicken Feet

It consists of of tendons, skin and cartilage and is rich in gelatinous collagen.

Chicken Feet, Big

- 20kg per Carton

Origin: China

Chicken Feet, Boneless

- 10kg per Carton

Origin: China

Chicken Feet, Medium

- 20kg per Carton

Origin: China

Chicken Feet, Small

- 15kg per Carton

Origin: China

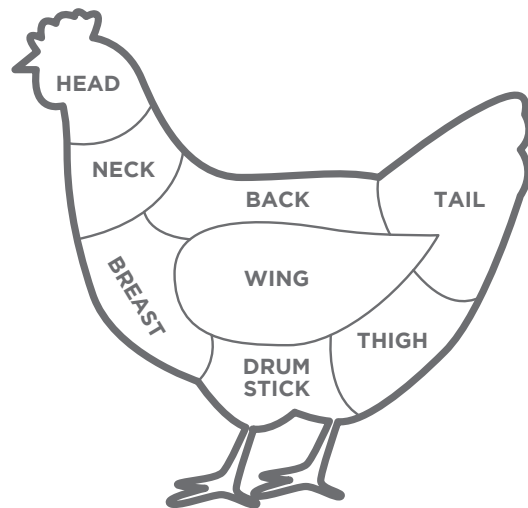
Chicken Leg

It is obtained by cutting the natural seam through the hip joint (articulation between the femur and the pelvis). A leg includes the thigh and drumstick jointed or disjointed and may include pelvic meat. It excludes pelvic bones, back skin, abdominal skin and excessive fat.

Chicken Drumstick

- 1kg/3kg per Pack
10kg/15kg/20kg per Carton

Origin: Thailand/USA/Netherlands/Canada/Brazil/UK





"When it comes to barbecued chicken, everyone wants that nice thick glaze of sauce attached to the skin, and the only way to do it, is brush it on as it cooks."

— Chef John, allrecipes.com

Chicken Leg, Quarter

- 2.5kg per Pack
7.8kg/10kg/15kg/18.14kg/20kg per Carton

Origin: China/USA/Canada/Denmark/
Thailand/Brazil

Chicken Leg, Quarter, Boneless, Rind-On

- 15kg per Carton

Origin: Brazil/USA/UK

Chicken Leg, Quarter, Boneless, Rind-Off

- 18.14kg per Carton

Origin: USA

Chicken Thigh, Boneless

- 20kg per Carton

Origin: China

Chicken Mechanically Deboned Meat (MDM) (Incl. Minced, Diced, Sliced, etc.)

Chicken products that have been minced, diced, sliced, etc.

Chicken Mechanically Deboned Meat (MDM), maximum 20% fat

- 10kg-27.22kg per Carton/Polyblock/Bag

Origin: Holland/Germany/Brazil/Poland/
Denmark/USA/Canada/UK/Australia/
Netherlands

Chicken Wing

A whole wing is produced by cutting the wing from a whole bird without giblets at the joint between the humerus and the backbone. The wing consists of: the first segment (drumette), the second segment (wingette) and the third segment (tip) containing the metacarpals and phalanges.

Chicken Middle Joint Wing

- 1kg per Pack
10kg per Carton

Origin: China

Chicken Party Wings

- 3-5kg per Pack
18.14kg per Carton

Origin: USA

Chicken Three Joint Wings

- 4.87kg/10kg per Carton

Origin: USA/UK/Malaysia

Chicken Wing Grade B

- 0.75kg/1.5kg/2kg per Pack
10kg per Carton

Origin: UK/Denmark

Chicken Tip Wing

- 9kg per Carton

Origin: China





Chicken Two Joint Wings

- 10kg per Carton

Origin: USA

Prime Chicken Wing Drummette

- 10kg per Carton

Origin: Holland

Processed Chicken Products

They are classified into breaded, deli meats, cured, marinated, raw and cooked products.

Tempura Chicken Nugget

- 800g per Pack/800g x 12 packs per Carton

Origin: Malaysia

Chicken Frankfurter

- 340g per Pack/340g x 32 packs per Carton

Origin: Malaysia

05 DAIRY

Dairy is the harvesting or processing of animal milk.



DAIRY



Butter

Butter is a yellow-to-white solid emulsion of fat globules, water, and inorganic salts produced by churning milk or cream. It contains at least 82% fat, a maximum of 2% non-fat dry matter (lactose, lactic acid, proteins) and a maximum of 16% water. Salted butter refers to butter that contains added salt and has a longer shelf-life while unsalted butter contains no added salt and has a shorter shelf-life.

Butter, Salted

- 0.25kg per Pack, 9.08/24 x 0.25/20 x 500g per Carton

Origin: France/New Zealand

Butter, Unsalted

- 0.2kg per Pack, 24 x 0.25kg per Carton

Origin: France

Butter Blocks, 2.5kg

- 10kg per Carton

Origin: Belgium

Butter Sheets, 2kg

- 10kg per Carton

Origin: Belgium

Cheese

Cheese (mozzarella, parmesan, slices, cream cheese) is one of the most concentrated sources of key nutrients, including calcium, protein, phosphorus and vitamins A, B12 and D which are derived from milk. It is produced in wide ranges of flavours, textures and forms by a coagulation of the milk protein casein.

Burger Sliced Cheese (White)

- 8.264kg per Carton

Origin: Germany

Cream Cheese 250g, 24s/500g, 12s/1kg, 6s

- 13.608/6kg per Carton

Origin: Australia/USA

Grated Colby Cheese

- 8 x 1kg

Origin: New Zealand

Grated Mild Cheese

- 8 x 1kg

Origin: New Zealand

Grated Mozzarella

- 4 x 2.5kg

Origin: New Zealand

Grated Mozzarella Cheese

- 8 x 1kg

Origin: New Zealand

Grated Pizza Blend Cheese

- 8 x 1kg

Origin: New Zealand

Mozzarella Cheese

- 1.5/5/10kg per Pack, 3.2/4kg per Carton

Origin: New Zealand/Indonesia

Mozzarella Cheese, Block

- 2.5/3.5kg per Pack, 10/20kg per Carton
- 2.5kg per Block

Origin: Argentina/Australia/France

Mozzarella Cheese, Shredded

- 0.25/1/3.5kg per Pack, 10/12kg per Carton
- 1kg per Pack, 10kg per Carton

Origin: Indonesia/France/Denmark

Mozzarella Vegetable Fat (Mozzana)

- 0.2kg per Pack

Origin: Denmark

Parmesan Grated Premium 14x300g

- 4.2kg per Carton

Origin: Indonesia

Parmesan Grated Regular & Premium 14x300g

- 4.2kg per Carton

Origin: Indonesia

Pizza Topping Shredded Cheese

- 12kg per Carton

Origin: Denmark

Pre-Blended Fresh Grated Parmesan Cheese with Salt

- 9.38kg per Carton

Origin: USA

Shredded Blend Cheese

- 9.45kg per Carton

Origin: USA

Shredded Parmesan

- 8 x 1kg

Origin: New Zealand

Sliced Cheese

- 4 x 1kg

Origin: New Zealand

Tasty Grated Cheese

- 8 x 1kg

Origin: New Zealand





Cream

Cream is a dairy product that is composed of a higher layer of yellowish fatty component that accumulates at the top surface of unhomogenised milk. In un-homogenised milk, the fat, which is less dense, eventually rises to the top. Light (18-30% fat), whipping (30%-36% fat) and cooking (20% fat).

Chocolate Mousse Cream 1L

- 6L per Carton

Origin: Belgium

Light Cream

- 1L per Pack

Origin: France

Stand & Overrun Cream 1L

- 6L per Carton

Origin: Belgium

Tiramisu Cream 1L

- 6L per Carton

Origin: Belgium

UHT Cooking Cream 20% Milk Fat

- 6/12L per Carton

Origin: Germany

UHT Whipping Cream

- 1L per Pack/6L per Carton

Origin: Australia/Korea/France

Milk

Milk is an excellent source of vitamins and minerals, particularly calcium. It has an important role in bone health. It is normally categorised as flavoured, semi-skimmed, skimmed and whole/full cream milk.

UHT Banana Flavoured Milk

- 0.2L per Pack

Origin: France

UHT Chocolate Flavoured Milk

- 0.2L per Pack

Origin: France

UHT Full Cream Milk

- 12 x 1L per Carton

Origin: France

UHT Semi-Skimmed Milk

- 0.2/1L per Pack/24 x 0.2L per Carton

Origin: France

UHT Skimmed Milk

- 1L per Pack

Origin: France

UHT Strawberry Flavoured Milk

- 0.2L per Pack

Origin: France

UHT Vanilla Flavoured Milk

- 0.2L per Pack

Origin: France

UHT Whole Milk

- 0.2/1L per Pack, 12L per Carton
/24 x 0.2L per Carton

Origin: France

06 DUCK

It is a water bird with short legs, neck, and a large flat beak. Duck is classified as white meat.



DUCK



Duck Carcass

A defeathered, bled, eviscerated whole duck carcass without an opened abdominal cavity.

Duck, Whole

- 0.8-1kg/1.7-1.89kg per Pack

Origin: Indonesia



07 FRIES

Fries are various forms of potato that are deep fried.

FRIES



Coated Fries

Coated, pre-fried and frozen fries with a different cut sizes.

Coated & Salted Fries 7x7mm/9x9mm

- 2.5kg per Pack

Origin: Belgium

Coated Jacket Oven Fries Skin On

- 10kg per Carton

Origin: Belgium

Sweet Potato Fries 10x10mm, 1kg

- 10kg per Carton

Origin: Belgium

Crinkle Cut Fries

Features a crinkle cut shape with the following cut sizes: 10x10mm/12x12mm/13x13mm. Available pre-fried and frozen.

Crinkle Cut Fries 13x13mm

- 10/12kg per Carton

Origin: New Zealand/Netherlands

Crinkle Cut Fries

Grade Food Service 12x12mm, 1kg

- 10kg per Carton

Origin: Belgium

Crinkle Cut Fries Grade A 10x10mm, 1kg

- 10kg per Carton

Origin: Belgium

Crinkle Cut Fries Grades A & B, 12x12mm

- 10kg per Carton

Origin: Belgium

Hash Browns

Finely chopped potatoes that are available in many shapes, sizes, flavours and standardised dimensions. They are then pre-fried, frozen and packed.

Hash Brown (Rectangular), 2.5kg

- 10kg per Carton

Origin: Belgium

Hash Brown (Round), 1kg

- 10kg per Carton

Origin: Belgium

Hash Brown (Triangle), 1kg

- 10kg per Carton

Origin: Belgium

Hash Brown (Triangle), 2.5kg

- 10kg per Carton

Origin: Belgium

Hash Brown Patty

- 15.3kg per Carton

Origin: Belgium

Pommes Noisettes/Rissoles

Prepared from mashed potatoes and breaded with crumbs. Features a spherical shape with a diameter of 25mm and weighs 7g per piece.

Pommes Noisettes Grade A

- 1/2.5kg per Bag

Origin: Belgium

Pommes Noisettes Grade A, 1kg

- 10kg per Carton

Origin: Belgium

Shoestring Fries

Straight cut fries with a cut size of 6 to 7mm. They are pre-fried and frozen.

French Fries, Shoestring Coated/Cut, 2.5kg

- 10kg per Carton

Origin: Netherlands

Frozen Shoestring Fries 6x6mm

- 12.5kg per Carton

Origin: Netherlands

Frozen Shoestring Fries 7x7mm

- 1kg per Bag

Origin: Belgium

Frozen Shoestring Fries 7x7mm Grade A/Grade B/1kg/2.5kg

- 10/12kg per Carton

Origin: Belgium/Thailand

Straight Cut Fries

Pre-fried and frozen straight cut fries with a cut size of 10x10mm.

Straight Cut Fries 10x10mm, 1kg

- 10/12kg per Carton

Origin: New Zealand/Belgium/Germany/Netherlands





Wedges

Available in the following versions: Spicy jacket wedges (0-52mm, consisting of 6-10 wedges); jacket wedges (medium size, consisting 8-10 wedges); mega jacket wedges (extra large wedges with skin).

Frozen Mega Wedges, 2.5kg

- 2.5kg per Pack

Origin: Netherlands

Jacket Wedges

- 2.5kg per Pack

Origin: Belgium

Spicy Wedges

- 1/2.5kg per Pack

Origin: Belgium/Netherlands

08 FRUITS

A fruit is the sweet and fleshy product of a tree or other plant that contains seeds and can be eaten.



FRUITS



Frozen Fruit

Frozen fruit refers to packaged fruit that has been washed, blanched and frozen using Individual Quick Freezing (IQF) Technology.

Blackcurrent-Ribes, 0.5kg

- 0.5kg per Bag

Origin: China

Blackcurrent-Ribes, 1kg

- 1kg per Bag

Origin: China

Blueberry-Cultivated, 0.5kg

- 0.5kg per Bag

Origin: China

Blueberry-Cultivated, 1kg

- 1kg per Bag

Origin: China

Blueberry-Cultivated, 13.61kg

- 13.61kg per Carton

Origin: China

Frozen Blackberry

- 10kg per Carton

Origin: China

Frozen Blackberry, 1kg

- 1kg per Bag

Origin: China

Frozen Blackberry, 2kg

- 10kg per Carton

Origin: China

Frozen Blackcurrant, 1kg

- 1kg per Bag

Origin: China

Frozen Blueberry, 2kg

- 10kg per Carton

Origin: China

Frozen Cranberry, 1kg

- 10kg per Carton

Origin: China

Frozen Diced Mango

- 10kg per Carton

Origin: China

Frozen Pineapple Chunk, 1kg

- 20kg per Carton

Origin: Indonesia

Frozen Sliced Kiwi, 2kg

- 10kg per Carton

Origin: China

Frozen Strawberry

- 0.45kg per Pack

Origin: Germany

Frozen Whole Strawberry

- 10 & 20kg per Carton

Origin: China

Frozen Whole Strawberry, 500g

- 0.5kg per Bag

Origin: China

Frozen Whole Strawberry, 1kg

- 1kg per Bag

Origin: China

Frozen Whole Strawberry, 1.8kg

- 1.8kg per Bag

Origin: China

Frozen Whole Strawberry, 2kg

- 10kg per Carton

Origin: China

IQF 70% Whole, 30% Broken Raspberry

- 10kg per Carton

Origin: China

IQF Blueberry

- 10kg per Carton

Origin: China

IQF Blueberry

- 13.6kg per Carton

Origin: USA

IQF Cranberry

- 20kg per Carton

Origin: China

IQF Cultivated Blueberry

- 10kg per Carton

Origin: China

IQF Lychee Meat

- 10kg per Carton

Origin: China

IQF Lychee Whole

- 10kg per Carton

Origin: China

IQF Lychee Whole

- 1kg per Bag

Origin: China

IQF Mixed Berries

- 10kg per Carton

Origin: China

IQF Mixed Berries, 1kg

- 1kg per Bag

Origin: China



**IQF Raspberry**

- 11.3kg per Carton

Origin: USA

IQF Raspberry Whole

- 10kg per Carton

Origin: China

IQF Strawberry-Sweet Charlie

- 10kg per Carton

Origin: China

IQF/Frozen Blackcurrent, 2kg

- 10kg per Carton

Origin: China

IQF/Frozen Kiwi Slices

- 10kg per Carton

Origin: China

Raspberry Whole Broken 20/80, 500g

- 0.5kg per Bag

Origin: China

Raspberry Whole Broken 20/80, 1kg

- 1kg per Bag

Origin: China

Raspberry Whole Broken 20/80, 10kg

- 10kg per Carton

Origin: China

Frozen Pulp & Puree

Fruit pulp is the edible portion and flesh of ripe fruit, mashed or cut into pieces but not reduced to a puree. Fruit puree however, refers to fruit that has been cooked, ground, pressed, blended or sieved until it becomes a creamy paste or liquid.

Frozen Avocado Puree

- 15kg per Drum

Origin: Indonesia

Frozen Cempedak Pulp

- 20kg per Carton

Origin: Indonesia

Frozen Durian Puree

- 20kg per Carton & 15kg per Drum

Origin: Indonesia

Frozen Guava Puree

- 15kg per Drum

Origin: Indonesia

Frozen Mango Puree

- 15kg per Drum

Origin: Indonesia

Frozen Passion Fruit Puree

- 1kg per Bag

Origin: Malaysia

Frozen Pineapple Puree

- 15kg per Drum

Origin: Indonesia

Frozen Soursop Puree

- 15kg per Drum

Origin: Indonesia

Frozen Strawberry Puree

- 15kg per Drum

Origin: Indonesia

Frozen Sweet Corn Puree

- 15kg per Drum

Origin: Indonesia

09 LAMB & MUTTON

Lamb comes from a sheep that is typically less than 1 year old. While mutton is the flesh of a mature sheep, this is more than 1 year old. Both are considered red meat.



LAMB & MUTTON



Lamb & Mutton Carcass

It refers to the entire unsplit carcass of lamb or mutton, also can be cut into pieces 6 pieces or more.

Lamb Carcass

- 16.5kg per Pack

Origin: Australia

Mutton Carcass 6 Way Cuts, Bone-In

- 18kg-20kg/24kg per Carton

Origin: Australia

Mutton Carcass 6 Way Cuts, Bone-In, Cube

- 22kg-24kg per Carton

Origin: Australia

Mutton Carcass 6-12 Way Cuts, Bone-In

- 20kg-24kg per Carton

Origin: Australia

Mutton Carcass, Bone-In

- 22kg per Carton

Origin: New Zealand

Mutton Trunk, Boneless, Cube

- 25kg-27kg per Carton

Origin: Australia

Lamb & Mutton Leg

Refers to the two hind legs, removed by a straight cut from the anterior to the hip bone cartilage that forms an approximate right angle to the length of the legs.

Lamb Leg, Bone-In, Chump-Off

- 2kg per Piece; 2-3kg per Pack; 16kg per Carton; 20kg per Carton, VP; 20-25kg per Carton

Origin: Australia

Lamb Leg, Bone-In, Chump-On

- 3-4kg per Pack; 20kg per Carton

Origin: Australia

Lamb Leg, Boneless

- 1.5-2kg/2-4kg per Pack; 2kg per Piece; 16kg-19kg per Carton; 20-25kg per Carton, IVP

Origin: Australia

Lamb Leg, Boneless, Chump-On, Shank-Off

- 0.5kg per Pack; 12kg per Carton, IVP

Origin: Australia

Mutton Leg, Bone-In, Chump-Off

- 18kg per Carton

Origin: Australia/New Zealand

Mutton Leg, Bone-In, Chump-On

- 18kg per Carton

Origin: Australia

Mutton Leg, Boneless, Chump-Off

- 19kg per Carton

Origin: Australia

Lamb & Mutton Rib

The rib is a section of the carcass on either side of the backbone between the shoulder and the loin and includes ribs 6 through 12.

Lamb Rack, Frenched

- 1kg/2kg per Piece; 20-25kg per Carton

Origin: Australia

Lamb Rack, Frenched, Bone-In

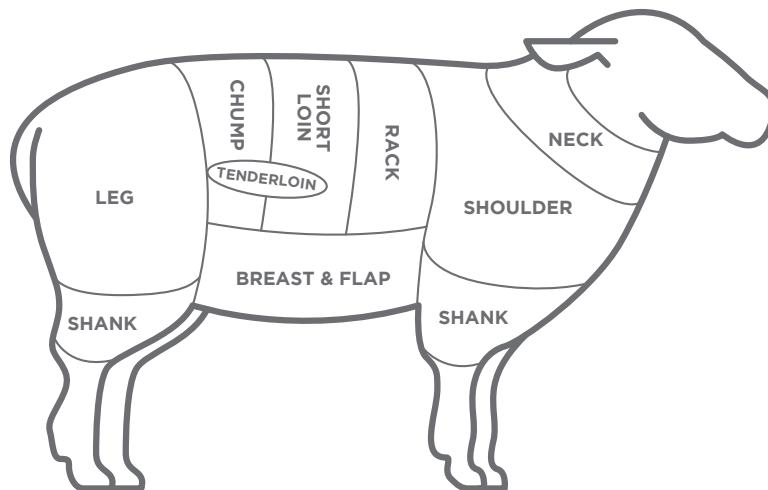
- 1.5kg per Piece; 30kg per Carton

Origin: Australia

Lamb Rack, Standard

- 16-18kg/18-22kg/20-25kg per Carton

Origin: Australia





Lamb Rack, Standard, Bone-In

- 1-1.5kg per Pack; 15-20kg/30kg per Carton

Origin: Australia

Mutton Rack, Standard, Bone-In

- 18kg per Carton, IWP

Origin: Australia

Lamb & Mutton Shank

The foreshank is the part of the front leg from the knee to the shoulder primal. The lower part of the foreshank half of the rear leg is known as a lamb shank.

Lamb Fore Shank

- 0.25kg-0.3kg/0.5kg per Piece; 1.5kg per Pack; 20kg per Carton, Layer Pack; 20-25kg per Carton

Origin: Australia

Mutton Fore Shank

- 18kg per Carton, Layer pack

Origin: New Zealand

Lamb & Mutton Shoulder

The shoulder refers to the primal cut that includes the upper front leg, the shoulder blade, ribs 1 through 5, and the neck.

Lamb Shoulder Rack, Frenched, Bone-In

- 20kg per Pack, VP

Origin: Australia

Lamb Shoulder, Banjo Cut

- 14-16kg per Carton, IVP

Origin: Australia

Lamb Shoulder, Bone-In

- 1-1.5kg per Pack; 2kg per Slab/Piece

Origin: Australia

Lamb Shoulder, Bone-In, Square Cut

- 21.4kg per Carton

Origin: Australia

Lamb Shoulder, Boneless

- 2kg per Slab

Origin: Australia

Mutton Shoulder, Bone-In, Square Cut

- 18kg-20kg per Carton

Origin: Australia

Lamb & Mutton Trimming and Mechanically Deboned Meat (MDM) (Incl. Diced, Minced, etc.)

Refers to lamb & mutton products that are trimmed diced, ground, minced, etc.

Lamb Trimming

- 20-27kg per Pack

Origin: Australia

Minced Mutton

- 10kg per Carton

Origin: Australia

Lamb Chop, Steak, Strip, Slice and Fillet

Chops are portions of lamb meat that are cut from different parts of the lamb like loin chop, rib chop, and sirloin chop.

Lamb Rack Chop

- 0.8kg-1.0kg per Pack

Origin: Australia

Mutton Bone

The bone remaining from a joint of mutton is called a mutton bone.

Mutton Femur Bone

- 14-16kg per Carton

Origin: Australia

Mutton Loin

The loin primal cut refers to the section along the back from the 13th rib to the hip.

Mutton Loin, Bone-In

- 16-18kg per Carton

Origin: Australia

Mutton Organ, Offal and Other Co-Products

Refers to a variety meats which come from the internal organs and entrails of a butchered sheep.

Mutton Bone Marrow

- 17kg per Carton

Origin: New Zealand







10 PORK

Pork originates from the
flesh of a domesticated pig.
It is a form of red meat.

* Not available in Malaysia & Indonesia

PORK



Pork Belly

The belly primal cut is prepared from the carcass after the leg, shoulder and loin have been separated from the side. Major sub-primal cuts include the belly, side ribs, breast bone, rib cartilage and belly trimmings.

Pork Belly, Bone-In, Rind-On, Natural Shape, Flank-Off

- 18kg/20kg/22.5kg/25kg/27kg per Carton/Polyblock, IWP

Origin: France/Germany/Spain/Belgium

Pork Belly, Bone-In, Rind-On, Natural Shape, Flank-Off, Grade B

- 23.5kg/25kg per Carton/Polyblock, IWP

Origin: Germany/France

Pork Belly, Bone-In, Rind-On, Natural Shape, Flank-On

- 20kg per Polyblock; 25kg per Carton

Origin: Belgium/Spain

Pork Belly, Bone-In, Rind-On, Natural Shape, Flank-On, Grade B

- 20-25kg per Carton

Origin: Philippines

Pork Belly, Bone-In, Rind-On, Square Cut

- 18kg/20kg/22.5kg per Carton

Origin: France/Belgium

Pork Belly, Bone-In, Rind-On, Square Cut, Flank-Off, Adobo Cut

- 2kg/5kg per Pack

Origin: France

Pork Belly, Bone-In, Rind-On, Square Cut, Flank-Off, Grade A

- 25kg per Carton

Origin: USA/Germany

Pork Belly, Bone-In, Rind-On, Square Cut, Flank-Off, Grade C

- 20kg per Carton, IWP

Origin: Germany

Pork Belly, Bone-In, Rind-On, Square Cut, Flank-Off, Lechon Belly Cut

- 4-5kg per Pack

Origin: France

Pork Belly, Bone-In, Rind-On, Square Cut, Flank-Off, Lechon Kawali Cut

- 0.25kg per Pack

Origin: France

Pork Belly, Bone-In, Rind-On, Square Cut, Flank-Off, Liempo Cut

- 0.15kg per Pack

Origin: France

Pork Belly, Bone-In, Rind-On, Square Cut, Flank-Off, Sawdust

- 2kg per Pack

Origin: France

Pork Belly, Bone-In, Rind-On, Square Cut, Flank-Off, Sliced

- 1kg per Pack, VP

Origin: France

Pork Belly, Bone-In, Rind-On, Square Cut, Flank-Off, Sliced 1"

- 1kg per Pack

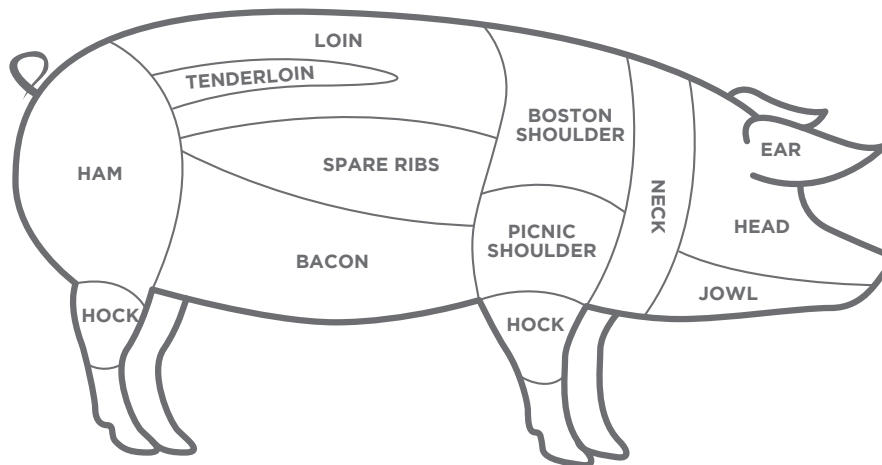
Origin: France


Pork Belly, Bone-In, Rind-On, Square Cut, Flank-Off, Sliced 1/2"

- 1kg per Pack

Origin: France

* Not available in Malaysia & Indonesia





“Avoid freezing whenever possible to eliminate moisture loss that occurs during thawing. The moisture loss in thawing results in less tender meat.”

— [recipetips.com](https://www.recipetips.com)

Pork Belly, Bone-In, Rind-On, Square Cut, Flank-Off, Sliced 3/4"

- 1kg per Pack

Origin: France

Pork Belly, Boneless, Rind-Off, Natural Shape, Flank-Off, Sheet-Ribbed

- 20kg per Carton/Polyblock; 22.5kg per Polyblock

Origin: Germany

Pork Belly, Boneless, Rind-Off, Square Cut, Sheet-Ribbed

- 20kg per Carton, IWP; 4.75kg/24.50kg per Carton

Origin: UK/Philippines/USA

Pork Belly, Boneless, Rind-Off, Square Cut, Single-Ribbed

- 18kg/20kg per Carton, IVP/IWP; 11kg per Carton, VP

Origin: Germany/Poland/Spain

Pork Belly, Boneless, Rind-On, Square Cut, Flank-Off, Sheet-Ribbed

- 22kg per Carton, IWP

Origin: Brazil

Pork Belly, Boneless, Rind-On, Square Cut, Sheet-Ribbed

- 18-20kg per Carton

Origin: Spain

Pork Belly, Boneless, Rind-On, Square Cut, Single-Ribbed

- 20kg per Carton, IVP/IWP

Origin: Germany/Spain

Pork Bone

The bone remaining from a joint of pork is called a pork bone.

Pork Brisket Bone

- 15kg per Carton

Origin: Canada

Pork Femur Bone

- 10kg per Carton

Origin: Spain

Pork Hind Shank Bones, Tibia

- 10kg per Carton

Origin: China

Pork Humerus Bone

- 10kg per Carton

Origin: Spain

Pork Neck Bone

- 10kg/15kg per Carton

Origin: UK/Canada/Spain

Pork Tip Bone

- 10kg per Carton

Origin: Spain

Pork Upper Arm Bone

- 10kg per Carton

Origin: UK

* Not available in
Malaysia & Indonesia



Pork Carcass

Refers to a whole carcass or carcass that has been split down to the backbone into halves.

Full Set, Suckling Pig

- 15-17kg per Carton

Origin: Philippines

Half Carcass, Headless

- 38kg per Naked Block

Origin: Philippines

Pork Chop, Steak, Strip, Slice and Fillet

Pork chops come from four major sections; the shoulder or blade chops, rib chops, loin chops, and sirloin chops.

Pork Loin Chop

- 3-7kg per Slab

Origin: Philippines

Pork Shoulder Steak

- 3.5kg per Slab

Origin: Philippines

Pork Collar (Neck)

The pork collar is cut from the top of the pig's neck, on the back behind the head and neck (jowl) and just above the shoulder (butt).

Pork Collar, Boneless

- 12kg/20kg per Carton

Origin: Ireland/Spain

Pork Fat and Rind (Skin)

Pork fat may include fat trimmings from the leg, loin, belly or shoulder. Pork rind is derived from the pork belly (belly rinds), loin (back rinds), leg (ham skins/pork shank rinds) or shoulder.

Pork Back Fat, Rind-Off

- 10kg per Bag; 18-20kg per Carton/Polyblock; 15kg/25kg/27.21kg per Carton

Origin: Netherlands/Belgium/Spain/France/Philippines

Pork Back Fat, Rind-On

- 13.6kg/18-20kg/20-25kg/27kg/27.22kg/30kg per Carton; 16kg/18-20kg/20-25kg per Polyblock; 20kg per Naked Block

Origin: USA/Germany/France/Belgium/Canada/Netherlands/Spain/Philippines

Pork Back Rind

- 20kg per Bag; 10kg/15-20kg/20-25kg/26kg/27kg per Carton; 5.8kg/18-20kg/20-25kg per Polyblock

Origin: Ireland/Netherlands/Italy/Argentina/Canada/Germany/Spain/Belgium/USA/UK/France

Pork Belly Fat/Soft Fat/Flair Fat, Rind-On

- 10kg per Carton

Origin: Germany

Pork Belly Rind

- 18-20kg per Carton; 16kg/18-20kg/20-25kg per Polyblock

Origin: Spain/Germany/Australia/France/Belgium/Ireland/Netherlands

Pork Collar (Neck) Fat, Rind-Off

- 20kg per Polyblock

Origin: Germany

Pork Cutting Fat (Leg Fat/Shoulder Fat/Ham Fat), Rind-Off

- 20kg/22.5kg/22.68kg/27.22kg per Carton;
15-20kg/20-25kg per Polyblock

Origin: Spain/Canada/USA/Germany/Belgium/
Netherlands/France

Pork Cutting Fat (Leg Fat/Shoulder Fat/Ham Fat), Rind-On

- 16.50kg/20kg/22.5kg/25kg/27.22kg per
Carton; 15kg/16.5kg/20kg/25kg per Polyblock;
20kg per Naked Block

Origin: Spain/Germany/Canada/Ireland/USA/
Netherlands/Belgium

Pork Ham Fat, Rind-Off

- 20kg/25kg/27.22kg per Carton; 20kg/22.5kg
per Polyblock

Origin: Canada/Germany/France

Pork Ham Fat, Rind-On

- 10kg per Bag; 20kg per Polyblock

Origin: France

Pork Minced Cutting Fat (Leg Fat/Shoulder Fat/Ham Fat)

- 18kg/20kg/25kg/27kg per Carton; 16-20kg
per Polyblock; 20kg per Naked Block

Origin: Germany/Canada/Australia/Ireland/
Netherlands

Pork Mixed Ham Fat and Rind

- 100kg per Polyblock

Pork Shoulder Fat, Rind-Off

- 25kg/27.22kg per Carton

Origin: Canada

Pork Shoulder Fat, Rind-On

- 10kg/50kg per Bag; 100kg per Polyblock

Pork Jowl

The jowl is harvested from the skull, separate from the jaw and free of hair roots.

Pork Jowl, Bone-In, Rind-On

- 18kg per Polyblock; 20-22kg per Carton;
27.20kg per Carton

Origin: Germany/Spain/Canada/Netherlands

Pork Jowl, Boneless, Rind-Off

- 10kg/22.50kg/27.22kg per Carton; 18-20kg per
Polyblock

Origin: Germany/Spain

Pork Jowl, Boneless, Rind-On

- 2.5-3.5kg per Pack; 10kg per Carton; 14-15kg
per Carton; 18-20kg per Carton/Polyblock;
20-25kg/27kg/27.22kg per Carton

Origin: Ireland/Germany/Spain/Netherlands/
UK/Denmark/Australia/Canada/USA

**Pork Jowl, Boneless, Rind-On,
without Control Cut**

- 20kg per Polyblock

Origin: Spain

* Not available in
Malaysia & Indonesia

* Not available in
Malaysia & Indonesia

Pork Leg and Ham

The pork leg or fresh ham is derived from the hind portion of the pig carcass and includes the following major muscle groups: inside muscle, outside muscle, knuckle, light butt, inner and outer shank meat. Options may include the presence/absence or partial removal (collaring) of skin, surface fat trim, bones, shank, flank and primary break between the leg/loin.

Pork Front Feet

- 10kg/15kg/18kg/20kg/22kg per Carton

Origin: France/Spain/UK/Canada/Mexico/
Germany/USA

Pork Front Feet, Cut Up

- 20kg per Carton

Origin: Canada

Pork Front Feet, Jumbo

- 1.31-1.6kg per Pack

Origin: Canada

Pork Front Feet, Large

- 1.11-1.3kg per Pack

Origin: Canada

Pork Front Feet, Sawdust

- 1kg per Pack

Origin: Canada

Pork Front Feet, Small

- 1-1.1kg per Pack

Origin: Canada

Pork Ham, Boneless, Rind-On, Round-Cut, Tenderloin-Off, Shank-On

- 6-6.5kg per Slab

Origin: Philippines

Pork Hind Feet

- 1.2-1.3kg per Pcs; 10kg per Carton

Origin: Philippines/Spain

Pork Knuckle, Feet-Off, Rind-On, Fat-On, Tail-Off, Rump-Off

- 13.61kg/20kg per Carton

Origin: Canada/USA

Pork Long Hock

- 20kg per Carton

Origin: USA

Pork Nail

- 20kg per Carton

Origin: Canada

Pork Loin

The loin is the middle back portion of the carcass that remains after the removal of the shoulder, leg, belly and back fat. The Bone-In loin contains the rib and the sirloin portion of the carcass, as well as the full tenderloin. Major sub-primal cuts include: Loin, Centre Cut Bone-In, Loin Rib-End, Full Boneless Back, Centre-Cut Boneless Back, Tenderloin, Sirloin-End, Back Ribs, Back Rib-Ends (riplets).

Pork Loin End

- 15kg/23.64kg per Carton

Origin: USA/Canada

**“Pricking lots of holes in
the skin makes for perfect
crispy pork belly.”**

— Masterchef John Zhang,
tasteshow.com





Pork Loin, Bone-In, Collar-Off, Ham Side-Off, Tenderloin-Off, Rind-Off, Loin Sub Muscle-On, Belly Sub Muscle-Off

- 6-6.5kg per Slab

Origin: Philippines

Pork Loin, Bone-In, Collar-Off, Ham Side-Off, Tenderloin-Off, Rind-On, Loin Sub Muscle-Off, Belly Sub Muscle-Off

- 35kg per Carton

Origin: USA

Pork Loin, Boneless, Sheet-Ribbed, Collar-Off, Ham Side-Off, Tenderloin-On, Rind-Off, Loin Sub Muscle-On, Belly Sub Muscle-Off

- 20kg per Carton

Origin: Spain

Pork Sirloin, Boneless

- 13.61kg per Carton

Origin: Canada

Pork Sirloin, Boneless, Rind-Off

- 27kg per Carton

Origin: Canada

Pork Tenderloin

- 15kg/27kg per Carton

Origin: Canada

Pork Organ, Offal and Other Co-Products

Offal refers to variety meats, which come from any of the various nonmuscular parts of the pig carcass.

Hog Casing

- 20/200 Hanks per Drum; 240kg per Drum (1kg per hank/ 240 hanks per Drum)

Origin: Philippines

Pork Brain

- 0.96kg per Carton

Origin: China

Pork Cheek Meat

- 10kg/20kg/27.22kg per Carton

Origin: USA/Netherlands

Pork Diaphragm

- 15kg-18kg per Carton; 20kg per Polyblock/ Naked Block

Origin: France/Germany/Belgium

Pork Diaphragm (Inside Skirt)

- 15-18kg per Polyblock

Origin: France

Pork Diaphragm, Hanging Tender

- 15kg per Naked Block

Origin: Germany

Pork Diaphragm, Trimmed

- 10kg/20kg per Carton/Polyblock; 14.50-18kg per Carton/Polyblock

Origin: Belgium/Netherlands/Spain

Pork Diaphragm, Trimmed, Hanging Tender

- 15kg per Polyblock

Origin: Spain

Pork Diaphragm, Untrimmed

- 18-20kg per Carton/Polyblock

Origin: Germany/Belgium

Pork Ear

- 10kg per Carton

Origin: Spain

Pork Ear Base

- 15kg/18.18kg/20kg per Carton

Origin: USA

Pork Ear Base, with Pate

- 10kg per Carton

Origin: USA

Pork Ear Drum

- 10kg/13.6kg/15kg per Carton; 20kg per Polyblock

Origin: Spain/USA

Pork Ear Drum, with Pate

- 10kg/20kg per Carton

Origin: USA/Spain/Germany/Canada

Pork Flower Fat, Boneless, Rind-Off

- 10kg per Carton

Origin: Spain

Pork Hanging Tender

- 18-20kg per Polyblock

Origin: France

Pork Head and Cheek Meat

- 15kg per Carton; 15-18kg/20kg per Polyblock

Origin: Germany/Canada/Belgium

Pork Head Mask, with Snout

- 2-2.5kg per Pack; 10kg/15kg/25kg per Carton; 18kg per Polyblock

Origin: Germany/Australia/Spain/UK/Denmark/Netherlands

Pork Head Mask, with Snout, Ears, Tongue

- 12-17kg per Carton

Origin: Philippines

Pork Head Mask, without Snout

- 10kg/12kg/30kg per Carton; 18kg/20kg per Polyblock

Origin: Germany/Spain/France/Canada/Brazil/Ireland/Netherlands/Belgium

Pork Head Meat

- 15kg/18.18kg per Carton; 15-20kg per Polyblock; 15kg/20kg per Naked Block

Origin: Germany/Spain/Canada/Belgium/France

Pork Head, Whole, Bone-In, Grade A

- 22.5kg per Carton

Origin: UK

Pork Head, with Snout and Ears, without Upper Jowl

- 24kg per Carton

Origin: Germany

Pork Kidney

- 10kg per Carton

Origin: Netherlands

* Not available in Malaysia & Indonesia

**“A good meat curry is always
a good thing to have in your
arsenal.”**

— Dini Kodippili,
Founder of the Flavor Bender



Pork Large Intestine

- 10kg/15kg per Carton

Origin: Spain

Pork Liver

- 1-2kg/2-3kg per Pack; 10-15kg/27.21kg per Carton; 18-20kg/22-23kg per Polyblock

Origin: Denmark/Netherlands/Canada/Australia/Germany/Brazil/Spain/Belgium/USA

Pork Oyster Piece

- 10kg per Carton

Origin: Netherlands/Germany

Pork Rectum/ Pork Bung

- 9.5kg per Carton

Origin: China

Pork Skirt

- 15kg per Carton/Polyblock

Origin: USA

Pork Small Intestine

- 10kg/15kg/20kg per Carton; 20kg per Polyblock

Origin: Spain/China/UK

Pork Stomach, Pouched Cut, Scalded

- 10kg/11.3kg/16kg per Carton

Origin: Germany/Canada

Pork Tail

- 10kg/15.6kg per Carton

Origin: USA/Spain

Pork Tongue

- 10kg/15kg per Carton

Origin: France/Spain/USA

Pork Tongue Root

- 10kg/18kg/20kg per Carton; 15kg/20kg per Polyblock

Origin: France/Spain/USA/Germany

Pork Uterus

- 10kg per Carton

Origin: Denmark/Netherlands

Pork Rib

Pork ribs are surrounded by lean meat taken from the back section of the rib cage.

Pork Baby Back Rib

- 10kg per Carton

Origin: Spain

Pork Chop End/ Pork Rib End

- 10kg/13.61kg/15kg per Carton

Origin: USA/France

Pork Loin Ribs

- 18.14kg per Carton

Origin: Canada

Pork Riblet

- 10kg/13.61kg/15kg per Carton

Origin: USA/Canada/Spain

Pork Spare Rib

- 9kg/10kg/11.3kg per Carton

Origin: Belgium/Canada

* Not available in
Malaysia & Indonesia

* Not available in
Malaysia & Indonesia

Pork Shoulder and Fore-End (Forend)

The pork shoulder originates from the front portion of the carcass, and is typically classified into two major sub-primal cuts: shoulder blade (part of the neck and back) and shoulder picnic (front leg portion). Major sub-primal cuts from the blade include: Top Blade (Boston Butt), Capicola, Collar Butt. Major sub-primal cuts from the picnic include: boneless picnic, cushion meat, fore-shank meat, hocks and riblets. The fore end of the pig includes the foot.

Pork Front Leg, Shoulder-Off, Shank-On, Feet-Off, Bone-In, Rind-On (Front Hock)

- 14-16kg per Carton

Origin: Germany

Pork Front Leg, Shoulder-Off, Shank-On, Feet-On, Bone-In, Rind-On

- 1-1.3kg per Piece; 9-10kg/18-20kg per Carton

Origin: USA/Germany/Spain/UK

Pork Shoulder, Boston Butt, Bone-In, Rind-On

- 5kg per Slab

Origin: Philippines

Pork Shoulder, Picnic, Bone-In, Rind-On

- 20kg per Carton; 25-27kg per Carton

Origin: Canada/USA

Pork Shoulder, Picnic, Boneless, Rind-Off

- 15kg/20-25kg/27.22kg per Carton, IWP; 20kg per Polyblock

Origin: Canada/USA/France/Germany

Pork Shoulder, Whole (Picnic and Boston Butt), Boneless, Rind-Off

- 10kg/20kg per Carton

Origin: Germany/USA/Canada

Pork Trimming and Mechanically Deboned Meat (MDM) (Incl. Diced, Minced, etc.)

Refers to pork products that have been trimmed diced, ground, minced, etc.

Pork Belly Trimmings 85CL/VL

- 2-3kg per Pack

Origin: France

Pork Front Feet Trimmings

- 1kg per Pack

Origin: Canada

Pork Trimmings 45CL/VL

- 27.2kg per Carton

Origin: Canada

Pork Trimmings 50CL/VL

- 10kg per Carton; 20kg per Naked Block

Origin: Spain

Pork Trimmings 60CL/VL

- 20kg per Polyblock

Origin: Germany/Spain

Pork Trimmings 80CL/VL

- 19kg per Carton

Origin: Germany



SEAFOOD

Seafood consists of unprocessed and processed food products made from marine life fit for consumption such as fish, shellfish and roe.



SEAFOOD



Fresh Fish

Red Tilapia

Tilapia is now the third most important fish species in aquaculture because of its good qualities such as a fast growth rate and good taste.

Red Tillapia

- 0.8-1kg per Piece

Origin: Thailand

Red Tilapia, Fillet, 300-400g

- 1kg per Bag

Origin: Thailand

Salmon

Salmon is a common food fish classified as an oily fish with a rich content of protein and omega-3 fatty acids, its flesh is ranges from orange to red.

Salmon Head-On

- 4-5kg per Piece

Origin: Norway

Salmon Head-On, 5-6kg

- 20kg/23.5kg per Carton

Origin: Norway

Salmon Trout

Salmon Trout Head-On, Gutted

- 21-25 kg per Carton

Origin: Norway

Salmon Trout Fillet

- 0.18kg-0.22kg

Origin: Norway

Frozen Crustacean

Blue Swimming Crab

It is also known by its scientific name *Portunus armatus* formerly known as *P. pelagicus* or common name, flower crab.

Blue Swimming Crab (F) 40/60; 50/80; 60/80; 80/100; 100/150; 150/200; 200 up; 200/300; 300 up

- 8kg/10kg/12kg per Carton

Origin: Bahrain/India/Pakistan

Blue Swimming Crab (M) 40/60; 50/80; 60/80; 80/100; 100/150; 150/200; 200 up; 200/300; 300 up

- 8kg/10kg/12kg per Carton

Origin: Bahrain/India/Pakistan

Soft Shell Crab

The soft-shell crab is removed from the water as soon as it molts to prevent any hardening of its shell.

Soft Shell Crab (No Water, AA Grade)

- 90-120g per piece

Origin: Vietnam

Soft Shell Crab

- 150-200g per piece

Origin: Indonesia

Spanner Crab

It is also known by its scientific name *Ranina ranina* or common name, spanner crab, frog crab, red frog crab or Kona crab.

Spanner Crab

- 200g per Piece

Origin: Indonesia

Three Spotted Crab

It is also known by its scientific name *Portunus sanguinolentus* or common name, three-spot crab.

Three Spot Crab (F) 40/60; 60/80; 80/100; 100/150; 150/200

- 6kg/10kg/8kg per Carton

Origin: Pakistan

Three Spot Crab (M) 40/60; 60/80; 80/100; 100/150; 150/200

- 6kg/10kg/8kg per Carton

Origin: Pakistan

Vannamei Shrimp

It is also known by its scientific name *Litopenaeus vannamei* or common name, Whiteleg shrimp, Pacific white shrimp or King prawn.

Broken

- 0.5kg per Pack & 1kg per Pack

Origin: Indonesia



Broken, 80% NW, Size M

- 10kg per Carton

Origin: Thailand

Broken, 80% NW, Size L

- 10kg per Carton

Origin: Thailand

Broken, 80% NW, Size XL

- 10kg per Carton

Origin: Thailand

Peeled, Deveined, Tail-On, 80% NW, 21/25

- 10kg per Carton

Origin: Thailand

Peeled, Deveined, Tail-On, 80% NW, 31/40

- 10kg per Carton

Origin: Thailand

Peeled, Deveined, Tail-On, 80% NW, 41/50

- 10kg per Carton

Origin: Thailand

Peeled, Deveined, Tail-On, 80% NW, 51/60

- 10kg per Carton

Origin: Thailand

Peeled, Deveined, Tail-On, 40% NW, 61/70

- 10kg per Carton

Origin: Thailand

Frozen Fish

Leather Jacket

Leather jacket fish are named for their thick skin, which has a sandpaper-like texture and peels easily from the flesh during preparation. There are 60+ species of leather jacket fish. They are usually marketed without differentiation, with the exception of the species 'Ocean Jacket', which is the most valuable of the Leather Jacket fish available.

Headed, Gutted, Tail-Off,

50/100; 200/300; 300/500; 700 UP - 90% NW

- 9kg/9.5kg per Carton

Origin: Indonesia/Vietnam

Mackerel

Mackerel fish consists of over 30 different species of pelagic fish, mostly from the family Scombridae.

Blue Saba Mackerel, 400-600g; 600-800g

- 20kg per Carton

Origin: Vietnam

Indian Mackerel 4/6A; 4/6AH; 4/6B; U/5A; U/5AH; 5/7A; 5/7AH; 6/8A; 6/8AH; 6/8B; 7/9A; 7/9A+; 7/9AA; 7/10; 8/9A; 8/9AH; 8/10A; 8/10A+; 8/10AA; 8/10AH; 8/10B; 8/12A; 8/12AA; 10/12A; 10/12AA; 10/12 AH; 10/12B; 12/15A; 12/15AH

- 10kg per Carton/Bag

Origin: Pakistan/China/India/Indonesia/Vietnam

Pacific Mackerel, 100-200g; 200-300g

- 15kg per Carton

Origin: China

**"It's better to buy them
fresh and in the shell for the
best flavour and texture."**

*— Gordon Ramsay,
Michelin-Decorated Mega-Star,
Global TV Personality*





Pangasius

Pangasius is the scientific family name for certain types of freshwater catfish primarily found in Vietnam, Cambodia and their neighbouring nations. It is also known by its scientific name Pangasius bocourti & Pangasius hypophthalmus.

Pangasius Cube, Untrimmed, 70% NW, 15-30g

- 1kg per Pack

Origin: Vietnam

Pangasius Cube, Untrimmed, 70% NW, 20-40g

- 10kg per Carton

Origin: Vietnam

Pangasius Cube, Untrimmed, 70% NW, 25-40g

- 10kg per Carton

Origin: Vietnam

Pangasius Cube, Well Trimmed, 60% NW, 20-40g

- 1kg per Pack

Origin: Vietnam

Pangasius Cube, Well Trimmed, 70% NW, 25-40g

- 10kg per Carton

Origin: Vietnam

Pangasius Fillet, Untrimmed, 70% NW, 170-200g (3 pcs/kg)

- 10kg per Carton

Origin: Vietnam

Pangasius Fillet, Untrimmed, 70% NW, 170-200g (4 pcs/kg)

- 10kg per Carton

Origin: Vietnam

Pangasius Fillet, Well Trimmed, 60% NW

- 10kg per Carton

Origin: Vietnam

Pangasius Fillet, Well Trimmed, 70% NW, 170-220g (3 pcs/kg)

- 1kg per Pack & 10kg per Carton

Origin: Vietnam

Pangasius Fillet, Well Trimmed, 70% NW, 170-220g (4 pcs/kg)

- 10kg per Carton

Origin: Vietnam

Pangasius Fillet, Well Trimmed, 80% NW, 170-220g

- 10kg per Carton

Origin: Vietnam

Pangasius Tatter, Broken Size (5-7 pcs/kg)

- 10kg per Carton

Origin: Vietnam

Pangasius, Untrimmed, 70% NW, 170-220g

- 0.5kg per Pack

Origin: Vietnam

Pangasius, Untrimmed, 80% NW, 170-220g

- 10kg per Carton

Origin: Norway

Pangasius, Well Trimmed, 80% NW, 170-220g

- 10kg per Carton

Origin: Vietnam

Pangasius, Well Trimmed, Portion Cut, 20-30g

- 10kg per Carton

Origin: Vietnam

Pollock

Also spelled pollack, the pollock is a North Atlantic fish from the cod family, Gadidae. The pollock is an elongated deep green fish with a pale lateral line and a pale belly.

Pollock Fillet

- 10kg per Carton

Origin: China

Rainbow trout

The rainbow trout (*Oncorhynchus mykiss*) belongs to a species of salmonid native to cold-water tributaries of the Pacific Ocean in Asia and North America.

Rainbow Trout

- 4-5kg per Piece

Origin: Norway

Ribbon Fish

It is also known as Cutlassfish, largehead hairtail. The taste of its flesh is somewhere between flounder and sea trout – mild with a hint of briny, ocean flavour. Its white flaky meat features a delicate texture.

Grade A, 100/200; 300/400; 300/500; 400 UP; 400/500; 400/700

- 10kg per Carton

Origin: Indonesia

Salmon

Salmon is an oily fish with a rich content of protein and omega-3 fatty acids. The colour of its flesh ranges from orange to red.

Salmon Belly, Fin-On

- 10kg per Carton

Origin: Norway

Salmon Belly, Skin-On

- 0.5kg-0.55kg per Pack

Origin: Norway

Salmon Fillet

- 0.2kg per Pack & 11kg per Carton

Origin: Chile

Salmon Fillet, 15-17 pcs

- 30 kg per Carton

Origin: Norway

Salmon Head-On, Guttled, 4-5kg

- 20kg/25kg per Carton

Origin: Norway

Salmon Head-On, Scale-On

- 4-5kg per Piece

Origin: Norway

Salmon Headless

- 20kg per Carton

Origin: Chile



**"Fat, salt and acidity: that is the
secret of good fish."**

— P McMahon,
Chef, Restaurateur, Author



Salmon Trout

Also known as fjord trout, the salmon trout is farmed in the pristine waters of various fjords in Norway. The skin of the fjord trout is similar to salmon. It features a lustrous and silvery colour, compared to the salmon which typically has more black spots near its face. In terms of colour, the flesh of the fjord trout is a more florid red-orange than the paler-skinned salmon.

Salmon Trout Belly, Skin-Off

- 0.14kg-0.22kg per Pack

Origin: Norway

Salmon Trout Bone

- 0.5kg per Pack

Origin: Norway

Salmon Trout Fillet

- 0.18kg-0.22kg per Pack

Origin: Norway

Salmon Trout Head

- 0.3kg-0.4kg per Pack

Origin: Norway

Salmon Trout Scrape

- 0.5kg per Pack

Origin: Norway

Snapper

Lutjanidae, or snappers are a family of perciform fish, mainly marine, but with some members inhabiting estuaries, feeding in fresh water. The family includes about 113 species. One of the best known members of the family is the red snapper.

Finleper Snapper, 70% NW, 500/800

- 10kg per Carton/Bag

Origin: Thailand

Finleper Snapper, 80% NW, 500/800

- 10kg per Carton/Bag

Origin: Thailand

Trout

Trout are species of freshwater fish and closely related to salmon and char. They are classified as oily fish and are an important food source for humans.

Trout Belly

- 20kg per Carton

Origin: Chile

Tuna

Tuna, (genus Thunnus), also called tunny, is of great commercial value as food. Tuna is related to mackerels and is placed with them in the family Scombridae (order Perciformes).

Tuna Steak, 100-130g

- 0.5kg per Pack

Origin: Indonesia

Frozen Mollusc

African Squid

It is also known by its scientific name *Alloteuthis africana*.

Block Quick Frozen, Whole Round, 300/500

- 20kg per Bag

Origin: Africa



Cuttlefish

Refers to marine mollusks that are closely related to octopuses and squids.

Cuttlefish Head, 100% NW

- 10kg per Carton

Origin: China

Giant Squid

It is also known by its scientific name *Dosidicus gigas*.

Giant Squid Neck, 80/150; 100/300; 100/500; 150/320; 200/500; 300/500; 500 UP

- 10kg per Block; 20kg per Bag

Origin: China/Peru/India

Giant Squid Tail, Seafrozen

- 16kg/20kg per Bag

Origin: Peru/China

Giant Squid Tentacles, 500/1000

- 10kg per Block; 20kg per Bag

Origin: China

Giant Squid Tube, Size U5 & U7, 70%NW

- 10kg per Carton

Origin: China

Giant Squid Wing, 500/800; 500/1000

- 15kg/20kg per Bag

Origin: Peru

Squid Cube, Unboiled, 70% NW

- 10kg per Carton

Origin: China

Squid Fillet, Skin-On

- 10kg per Bag

Origin: China

Squid Flower, Grade A, 70% NW

- 10kg per Carton

Origin: China/Vietnam

Squid Flower, Grade A, 80% NW

- 10kg per Carton

Origin: China

Squid Head, 20/40

- 10kg per Bag

Origin: China

Squid Roe

- 10kg per Carton

Origin: China/Pakistan

Illex Squid

It is also known by its scientific name *Illex argentinus* or common name, Argentine shortfin squid.

Block Quick Frozen, Whole Round U100; 100/150; 100/200; 100/300; 150/200; 200/300

- 10kg/12.5kg/20kg per Carton/Bag

Origin: China, Argentina, Vietnam

Illex Squid Roe, 2kg/Block

- 10kg per Carton

Origin: China

Squid Head, 20/40

- 10kg per Bag

Origin: China

Squid Ring

- 1kg per Pack

Origin: Indonesia

Squid Ring, Skin On

- 10kg per Carton

Origin: China

Squid Ring, Skin Off

- 10kg per Carton

Origin: China

Indian Squid

It is also known by its scientific name *Uroteuthis duvaucelii* or *Loligo duvaucelii*. Its common name is, Indian Ocean Squid.

Indian Squid Neck, Clean & Cut, 80/150; 100/250; 150/320; 320; 200/500

- 10kg per Block; 20kg per Bag

Origin: China

Indian Squid Neck, Uncut, Seafrozen, 150/500; 200/400

- 12.5kg/15kg/20kg per Bag

Origin: China

Indian Squid Tail, 11/13/14/15 cm up

- 10kg per Bag

Origin: China

Squid Flower, Grade A, 70% NW

- 10kg per Carton

Origin: China/Vietnam

Squid Flower, Grade A, 80% NW

- 10kg per Carton

Origin: China

Squid Tentacles, Cut, 60% NW

- 10kg per Carton

Origin: China

Squid Tentacles, Cut, 70% NW

- 10kg per Carton

Origin: China

Squid Tentacles, Long-Cut, 60% NW

- 10kg per Carton

Origin: China

Mussel

A mussel has a shell whose outline is elongated and asymmetrical compared with other edible clams, which are often more or less rounded or oval. Mussels can come from saltwater and freshwater habitats.

Half Shell Mussels, Size M (6-8 cm)

- 10kg per Carton

Origin: China

Half Shell Mussels, Size L (8-10 cm)

- 10kg per Carton

Origin: China





Todarodes Squid

It is also known by its scientific name *Todarodes pacificus*. It is also commonly known as Japanese flying squid, Japanese common squid or Pacific flying squid.

Block Quick Frozen, Whole Round 100/150; 150/200

- 15kg per Carton/Bag

Origin: China

Squid Ring

- 1kg per Pack

Origin: Indonesia

Squid Ring, Skin-On

- 10kg per Carton

Origin: China

Squid Ring, Skin-Off

- 10kg per Carton

Origin: China

Frozen Processed Seafood Products

They refer to breaded or battered ready-to-cook seafood products or any seafood product that has been cured, cooked, frozen or preserved in any manner.

Breaded Popcorn Shrimp

- 0.5kg per Pack

Origin: Indonesia

Fish Ball with Cheese & Shrimp 160gx40; 450gx24; 500gx24

- 6.4kg/10.8/12kg per Carton

Origin: Malaysia

Fish Ball with Fish Roe 500gx24

- 12kg per Carton

Origin: Malaysia

Japanese Cheese Fish Tofu 500gx24

- 12kg per Carton

Origin: Malaysia

Japanese Fish Tofu 160gx40; 500gx24

- 6.4kg/12kg per Carton

Origin: Malaysia

Prefried Tempura Shrimp Ebi Fry 51/60

- 0.36kg-0.38kg per Pack

Origin: Indonesia

Salmon Flavoured Ball with Cheese 175gx40; 500gx24

- 7kg/12kg per Carton

Origin: Malaysia

Shrimp Nugget Crunchy

- 0.5kg per Pack

Origin: Indonesia

Shrimp Nugget Special

- 0.5kg per Pack

Origin: Indonesia

12 TURKEY

Turkey is white meat from typically domesticated and wild turkeys.



TURKEY



Processed Turkey Products

Refers to any turkey product that has been cured, cooked, frozen or preserved in any manner.

Turkey Ham

- 5kg per Carton

Origin: Australia

Turkey Carcass

Refers to whole turkey, with all parts intact.

Whole Turkey

- 3-8kg per Bird

Origin: USA

Turkey Trimming and Mechanically Deboned Meat (MDM) (Incl. Diced, Minced, etc.)

Turkey product that are trimmed diced, ground, minced and others.

Turkey Mechanically Deboned Meat (MDM)

- 20kg per Carton

Origin: Canada

VEGETABLES

Vegetables are edible plant matter including the flowers, fruits, stems, leaves, roots, and seeds.



VEGETABLES



Dehydrated/Dried Vegetables

Bay Leaves (Dried)

- 2.72kg per Carton

Origin: Turkey

Dehydrated Cabbage 5x5mm

- 20kg per Carton

Origin: China

Dehydrated Carrot 5x5mm

- 20kg per Carton

Origin: China

Dehydrated Spinach 1x1mm

- 10kg per Carton

Origin: China

Dehydrated Spinach 2x2mm

- 10kg per Carton

Origin: China

Dehydrated Spring Onion 1x1mm

- 10kg per Carton

Origin: China

Dehydrated Spring Onion 2x2mm

- 10kg per Carton

Origin: China

Parsley Flakes (Dried)

- 2.27kg per Carton

Origin: UK

Rosemary (Dried)

- 6.81kg per Carton

Origin: USA

Frozen Vegetables

Edamame, 1kg

- 24kg per Carton

Origin: China

CONTACT US

MALAYSIA (OHQ)

DPO International Sdn. Bhd. (OHQ)

(Company No: 677120 - X)

DPO Malaysia Sdn. Bhd.

(Company No: 502497 - U)

Kuala Lumpur - Headquarters

DPO House, B2-G, Lorong Selangor, Pusat Komersial Gaya
Pusat Bandar Melawati, 53100 Kuala Lumpur, Malaysia

Tel : +603 4108 1282

Fax : +603 4108 1262

Email: info@dpointernational.com

Johor Bahru

B-03-14, 1 Tebrau, Jalan Tebrau, Off Jalan Seri Setanggi
Taman Seri Setanggi, 80250 Johor Bahru, Johor, Malaysia
Email: enquiry-cfd@dpointernational.com

Penang

No. 30, Jalan Perniagaan Seri Juru 1
Pusat Perniagaan Seri Juru
14100 Simpang Ampat, Pulau Pinang
Email: enquiry-cfd@dpointernational.com

CHINA

Beijing

DPO Beijing Company Ltd.

(Company No: 91110105322176535H)

No.2111 Tower-A, Freetown
58 South Road, Dongsanhuan
Chaoyang District, Beijing 100022, China
Tel : +86 10 5867 4850
Fax : +86 10 5867 4870

Guangzhou

Guangzhou DPO Company Limited

(Reg No: 440104000131512)

Unit 2807 / 8, Nangfang Railway Building
No. 57 Zhongshan Yi Road
Yuexiu District, 510600 Guangzhou, China
Tel : +86 20 8767 7195
Fax : +86 20 8767 6265

Shanghai

DPO Beijing Trading Company Limited

(Shanghai Liaison Office)

Room 412, 800 Shangcheng Road
Pudong New Area, Shanghai, China
Tel : +86 21 5836 0925 / 0923
Fax : +86 21 5836 0928

Hong Kong

DPO Holdings Company Ltd.

DPO International Ltd.

Tel : +603 4108 1282

INDONESIA

PT. DPO Indonesia

(Company No: 03.319.369.9-086.000)

PT. Foodtech Indonesia

Jakarta

Jl. MH. Thamrin, Komplek Duta Indah Iconic
Unit C41- C42 Tangerang 15143, Indonesia
Tel : +62 21 2967 1631-37
Fax : +62 21 2986 6712

Bali

Jl. Mahendradata
No.90 Blok. 2-4 Padang Sambian
Denpasar Bali 80117 Indonesia
Tel : +62 36 1907 5252
Fax : +62 36 1907 5255

Makassar

Jl. Prof Insinyur Sutami
No. 38, Blok A, No. 8, Kompleks Ruko Akasia
Kecamatan Tamalanrea, Kota Makassar
90244 Sulawesi Selatan, Indonesia
Tel : +62 41 1474 2978

Medan

Komplek MMTC Blok D No.80 (Jl. Pancing)
Medan Estate, Sumatera Utara, Medan 20371, Indonesia
Tel : +62 61 8001 7200
Fax : +62 61 8001 7199

CONTACT US

Surabaya

Pergudangan Platinum East Road
Blok D-1, Jl. Raya Lingkar Timur
Banjarsari – Buduran – Sidoarjo, Surabaya, Indonesia
Tel : +62 31 9903 1145
Fax : +62 31 9903 1246

Semarang

JL. Sarwo Edy Wibowo No.238
Plamongan Sari, Pedurungan Semarang
Jawa Tengah, 50192 Indonesia
Tel : +62 24 7641 2126

PHILIPPINES

DPO Philippines Inc.

(Company No: A200116688)

Manila

Unit 1004, Prestige Tower, F. Ortigas Jr. Road
Ortigas Center, Pasig City, 1605 Manila, Philippines
Tel : +63 2 637 3041
Fax : +63 2 687 3404

Bacolod

VL Yap St. Prk. Hollowblocks Greenplains Subd. II Brgy.
Singcang-Airport Bacolod City Negros Occidental
Philippines 6100
Tel : +63 034-704 0118

Cebu

c/o Cold Link Asia Logistics Corporation Compound
PC Suico Street, Tabok, Mandaue City, Cebu, Philippines
Tel : +63 32 328 0629
Fax : +63 32 346 7534

Davao

c/o Vifel Ice Plant & Cold Storage, Inc.
Km. 20, Barangay Tibungco
Bunawan District, Davao City
Davao Del Sur, Philippines
Tel : +63 82 234 8544
Fax : +63 82 234 8544

Iloilo

Iloilo Fish Port Complex Tanza, Iloilo City, Philippines
Tel : +63 33 514 3925

SRI LANKA

DPO Lanka (Private) Limited

(Company No: W/98797)

Colombo

235/2 Hekitta Road, Wattala, 11300 Sri Lanka
Tel : +94 11 298 2656
Fax : +94 11 281 9591

THAILAND

DPO (Thailand) Ltd.

(Company No: 0105544001757)

DPO (Chiangmai) Company Ltd.

Bangkok

43 Thai CC Tower, 19th Floor
Room No.194, South Sathorn Road
Yannawa, Sathorn, Bangkok 10120, Thailand
Tel : +66 2672 3920
Fax : +66 2672 3923

Chiangmai

DPO (Chiangmai) Co. Ltd

169/61 Star Avenue 5 Moo 4
San Phak Wan Subdistrict
Hangdong District, Chiangmai 50230, Thailand
Tel : +66 5324 3713
Fax : +66 5324 3715

VIETNAM

DPO Viet Nam Company Limited

(Company No: 0314666506)

Ho Chi Minh City

No. 48 - 34B Road, Town 5, An Phu Ward
Thu Duc City, Ho Chi Minh City, Vietnam
Tel : +84 28 2253 8606
Fax : +84 28 2253 8609



NEED MORE HELP?

Get in touch with us.
Send your enquiries to info@dpointernational.com



**FROZEN
CHILLED
FRESH**



www.dpointinternational.com



facebook.com/dpointl



linkedin.com/company/dpointinternational

*Disclaimer: The product images shown are for illustration purposes only and may not be the exact representation of the products.

July 2021